

SERPINF1 Antibody (Center)

Purified Rabbit Polyclonal Antibody (Pab)

Catalog # AP7315c

Product Information

Application	IHC-P, FC, WB, E
Primary Accession	P36955
Other Accession	P97298 , Q95121
Reactivity	Human
Predicted	Bovine, Mouse
Host	Rabbit
Clonality	Polyclonal
Isotype	Rabbit IgG
Calculated MW	46312
Antigen Region	279-306

Additional Information

Gene ID	5176
Other Names	Pigment epithelium-derived factor, PEDF, Cell proliferation-inducing gene 35 protein, EPC-1, Serpin F1, SERPINF1, PEDF
Target/Specificity	This SERPINF1 antibody is generated from rabbits immunized with a KLH conjugated synthetic peptide between 279-306 amino acids from the Central region of human SERPINF1.
Dilution	IHC-P~~1:100~500 FC~~1:10~50 WB~~1:1000 E~~Use at an assay dependent concentration.
Format	Purified polyclonal antibody supplied in PBS with 0.09% (W/V) sodium azide. This antibody is prepared by Saturated Ammonium Sulfate (SAS) precipitation followed by dialysis against PBS.
Storage	Maintain refrigerated at 2-8°C for up to 2 weeks. For long term storage store at -20°C in small aliquots to prevent freeze-thaw cycles.
Precautions	SERPINF1 Antibody (Center) is for research use only and not for use in diagnostic or therapeutic procedures.

Protein Information

Name	SERPINF1
Synonyms	PEDF

Function	Neurotrophic protein; induces extensive neuronal differentiation in retinoblastoma cells. Potent inhibitor of angiogenesis. As it does not undergo the S (stressed) to R (relaxed) conformational transition characteristic of active serpins, it exhibits no serine protease inhibitory activity.
Cellular Location	Secreted. Melanosome. Note=Enriched in stage I melanosomes
Tissue Location	Retinal pigment epithelial cells and blood plasma.

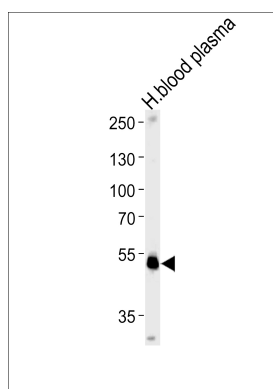
Background

SERPINF1 is a member of the serpin family. Serpins are a group of serine protease inhibitors, some of which have also been reported to exhibit neurotrophic activity.

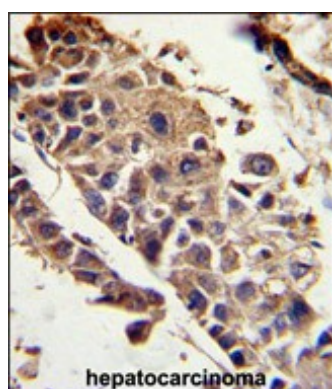
References

Bessho,H., Kondo,N. Mol. Vis. 15, 1107-1114 (2009)
Petersen,S.V., Valnickova,Z. Biochem. J. 374 (PT 1), 199-206 (2003)
Tombran-Tink,J., Pawar,H. Genomics 19 (2), 266-272 (1994)

Images

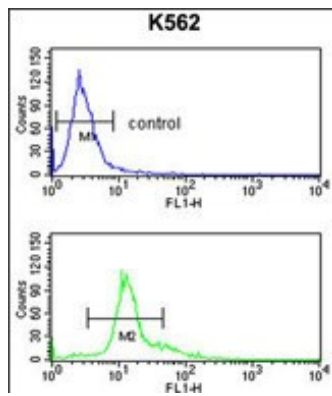


SERPINF1 Antibody (Center) (Cat. #AP7315c) western blot analysis in human blood plasma tissue lysates (35ug/lane). This demonstrates the SERPINF1 antibody detected the SERPINF1 protein (arrow).



Formalin-fixed and paraffin-embedded human hepatocarcinoma reacted with SERPINF1 Antibody (Center), which was peroxidase-conjugated to the secondary antibody, followed by DAB staining. This data demonstrates the use of this antibody for immunohistochemistry; clinical relevance has not been evaluated.

SERPINF1 Antibody (Center) (Cat. #AP7315c) flow cytometry analysis of K562 cells (bottom histogram) compared to a negative control cell (top histogram). FITC-conjugated goat-anti-rabbit secondary antibodies were used for the analysis.



Please note: All products are 'FOR RESEARCH USE ONLY. NOT FOR USE IN DIAGNOSTIC OR THERAPEUTIC PROCEDURES'.