

ZnT-8 Polyclonal Antibody

Catalog # AP73173

Product Information

Application	WB
Primary Accession	Q8IWU4
Reactivity	Human
Host	Rabbit
Clonality	Polyclonal
Calculated MW	40755

Additional Information

Gene ID	169026
Other Names	SLC30A8; ZNT8; Zinc transporter 8; ZnT-8; Solute carrier family 30 member 8
Dilution	WB~~Western Blot: 1/500 - 1/2000. ELISA: 1/10000. Not yet tested in other applications.
Format	Liquid in PBS containing 50% glycerol, 0.5% BSA and 0.09% (W/V) sodium azide.
Storage Conditions	-20°C

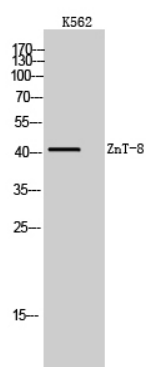
Protein Information

Name	SLC30A8 (HGNC:20303)
Function	Proton-coupled zinc ion antiporter mediating the entry of zinc into the lumen of pancreatic beta cell secretory granules, thereby regulating insulin secretion.
Cellular Location	Cytoplasmic vesicle, secretory vesicle membrane; Multi-pass membrane protein. Cell membrane; Multi-pass membrane protein. Note=Associated with insulin and glucagon secretory granules.
Tissue Location	In the endocrine pancreas, expressed in insulin- producing beta cells. Expressed at relatively high levels in subcutaneous fat tissue from lean persons; much lower levels in visceral fat, whether from lean or obese individuals, and in subcutaneous fat tissue from obese individuals. Expressed in peripheral blood mononuclear cells, including T-cells and B-cells, with great variation among individuals ranging from negative to strongly positive

Background

Facilitates the accumulation of zinc from the cytoplasm into intracellular vesicles, being a zinc-efflux transporter. May be a major component for providing zinc to insulin maturation and/or storage processes in insulin-secreting pancreatic beta- cells.

Images



Western Blot analysis of K562 cells using ZnT-8 Polyclonal Antibody. Secondary antibody was diluted at 1:20000

Please note: All products are 'FOR RESEARCH USE ONLY. NOT FOR USE IN DIAGNOSTIC OR THERAPEUTIC PROCEDURES'.