

A1BG Antibody (C-term)

Purified Rabbit Polyclonal Antibody (Pab)

Catalog # AP7322b

Product Information

Application	WB, IHC-P, E
Primary Accession	P04217
Reactivity	Human
Host	Rabbit
Clonality	Polyclonal
Isotype	Rabbit IgG
Clone Names	RB18670
Calculated MW	54254
Antigen Region	421-449

Additional Information

Gene ID	1
Other Names	Alpha-1B-glycoprotein, Alpha-1-B glycoprotein, A1BG
Target/Specificity	This A1BG antibody is generated from rabbits immunized with a KLH conjugated synthetic peptide between 421-449 amino acids from the C-terminal region of human A1BG.
Dilution	WB~~1:1000 IHC-P~~1:100~500 E~~Use at an assay dependent concentration.
Format	Purified polyclonal antibody supplied in PBS with 0.09% (W/V) sodium azide. This antibody is prepared by Saturated Ammonium Sulfate (SAS) precipitation followed by dialysis against PBS.
Storage	Maintain refrigerated at 2-8°C for up to 2 weeks. For long term storage store at -20°C in small aliquots to prevent freeze-thaw cycles.
Precautions	A1BG Antibody (C-term) is for research use only and not for use in diagnostic or therapeutic procedures.

Protein Information

Name	A1BG
Cellular Location	Secreted.
Tissue Location	Plasma.

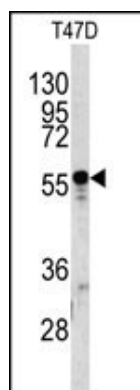
Background

A1BG is a plasma glycoprotein of unknown function. The protein shows sequence similarity to the variable regions of some immunoglobulin supergene family member proteins.

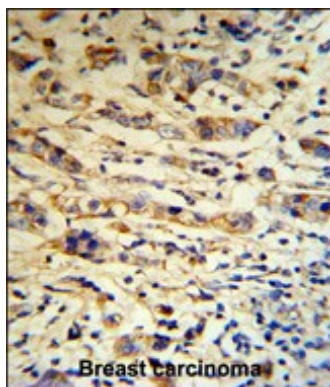
References

Tian,M., Cui,Y.Z. BMC Cancer 8, 241 (2008)
Eiberg,H., Bisgaard,M.L. Clin. Genet. 36 (6), 415-418 (1989)

Images



Western blot analysis of A1BG antibody (C-term) (Cat.#AP7322b) in T47D cell line lysates (35ug/lane). A1BG (arrow) was detected using the purified Pab.



A1BG Antibody (C-term) (RB18670) IHC analysis in formalin fixed and paraffin embedded human breast carcinoma tissue followed by peroxidase conjugation of the secondary antibody and DAB staining. This data demonstrates the use of the A1BG Antibody (C-term) for immunohistochemistry. Clinical relevance has not been evaluated.

Please note: All products are 'FOR RESEARCH USE ONLY. NOT FOR USE IN DIAGNOSTIC OR THERAPEUTIC PROCEDURES'.