

NVL Polyclonal Antibody

Catalog # AP73230

Product Information

Application	WB, E
Primary Accession	O15381
Reactivity	Human, Mouse, Rat
Host	Rabbit
Clonality	Polyclonal
Calculated MW	95051

Additional Information

Gene ID	4931
Other Names	NVL; Nuclear valosin-containing protein-like; NVLp; Nuclear VCP-like protein
Dilution	WB~~Western Blot: 1/500 - 1/2000. ELISA: 1/20000. Not yet tested in other applications. E~~N/A
Format	Liquid in PBS containing 50% glycerol, 0.5% BSA and 0.09% (W/V) sodium azide.
Storage Conditions	-20°C

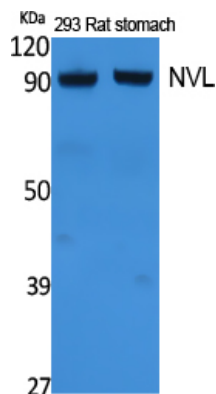
Protein Information

Name	NVL (HGNC:8070)
Function	Participates in the assembly of the telomerase holoenzyme and effecting of telomerase activity via its interaction with TERT (PubMed: 22226966). Involved in both early and late stages of the pre- rRNA processing pathways (PubMed: 26166824). Spatiotemporally regulates 60S ribosomal subunit biogenesis in the nucleolus (PubMed: 15469983 , PubMed: 16782053 , PubMed: 26456651 , PubMed: 29107693). Catalyzes the release of specific assembly factors, such as WDR74, from pre-60S ribosomal particles through the ATPase activity (PubMed: 26456651 , PubMed: 28416111 , PubMed: 29107693).
Cellular Location	[Isoform 2]: Nucleus, nucleoplasm
Tissue Location	Widely expressed. Highest level of expression in heart, placenta, skeletal muscle, pancreas and retina

Background

Participates in the assembly of the telomerase holoenzyme and effecting of telomerase activity via its interaction with TERT (PubMed:[22226966](#)). Involved in both early and late stages of the pre-rRNA processing pathways (PubMed:[26166824](#)). Spatiotemporally regulates 60S ribosomal subunit biogenesis in the nucleolus (PubMed:[15469983](#), PubMed:[16782053](#), PubMed:[29107693](#), PubMed:[26456651](#)). Catalyzes the release of specific assembly factors, such as WDR74, from pre-60S ribosomal particles through the ATPase activity (PubMed:[29107693](#), PubMed:[26456651](#), PubMed:[28416111](#)).

Images



Western Blot analysis of extracts from rat stomach, 293 cells, using NVL Polyclonal Antibody.. Secondary antibody was diluted at 1:20000 cells nucleus extracted by Minute TM Cytoplasmic and Nuclear Fractionation kit (SC-003, Inventbiotech, MN, USA).

Please note: All products are 'FOR RESEARCH USE ONLY. NOT FOR USE IN DIAGNOSTIC OR THERAPEUTIC PROCEDURES'.