

BTBD1 Antibody (Center)

Purified Rabbit Polyclonal Antibody (Pab)

Catalog # AP7323c

Product Information

Application	WB, FC, E
Primary Accession	Q9H0C5
Other Accession	P58544
Reactivity	Human, Mouse
Host	Rabbit
Clonality	Polyclonal
Isotype	Rabbit IgG
Clone Names	RB18689
Calculated MW	52771
Antigen Region	295-322

Additional Information

Gene ID	53339
Other Names	BTB/POZ domain-containing protein 1, Hepatitis C virus NS5A-transactivated protein 8, HCV NS5A-transactivated protein 8, BTBD1, C15orf1, NS5ATP8
Target/Specificity	This BTBD1 antibody is generated from rabbits immunized with a KLH conjugated synthetic peptide between 295-322 amino acids from the Central region of human BTBD1.
Dilution	WB~~1:1000 FC~~1:10~50 E~~Use at an assay dependent concentration.
Format	Purified polyclonal antibody supplied in PBS with 0.09% (W/V) sodium azide. This antibody is prepared by Saturated Ammonium Sulfate (SAS) precipitation followed by dialysis against PBS.
Storage	Maintain refrigerated at 2-8°C for up to 2 weeks. For long term storage store at -20°C in small aliquots to prevent freeze-thaw cycles.
Precautions	BTBD1 Antibody (Center) is for research use only and not for use in diagnostic or therapeutic procedures.

Protein Information

Name	BTBD1
Synonyms	C15orf1, NS5ATP8
Function	Probable substrate-specific adapter of an E3 ubiquitin- protein ligase

complex which mediates the ubiquitination and subsequent proteasomal degradation of target proteins (PubMed:[14528312](#)). Seems to regulate expression levels and/or subnuclear distribution of TOP1, via an unknown mechanism (By similarity). May play a role in mesenchymal differentiation where it promotes myogenic differentiation and suppresses adipogenesis (By similarity).

Cellular Location	Cytoplasm. Note=Localizes to punctate or elongated cytoplasmic bodies.
Tissue Location	Ubiquitous; highest levels in testes, heart and skeletal muscle.

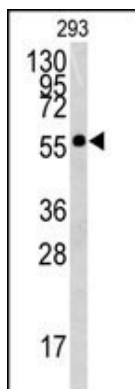
Background

BTBD1 binds topoisomerase I. The N-terminus contains a proline-rich region and a BTB/POZ domain (broad-complex, Tramtrack and bric a brac/Pox virus and Zinc finger), both of which are typically involved in protein-protein interactions. Subcellularly, the protein localizes to cytoplasmic bodies.

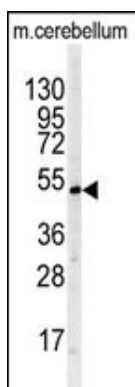
References

Pisani,D.F., Cabane,C. Cell Death Differ. 11 (11), 1157-1165 (2004)
Xu,L., Yang,L. Exp. Cell Res. 288 (1), 84-93 (2003)
Xu,L., Yang,L. BMC Genomics 3 (1), 1 (2002)

Images

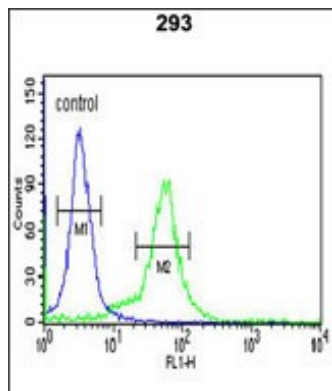


Western blot analysis of BTBD1 antibody (Center) (Cat.#AP7323c) in 293 cell line lysates (35ug/lane). BTBD1 (arrow) was detected using the purified Pab.



Western blot analysis of BTBD1 antibody (Center) (Cat.#AP7323c) in mouse cerebellum tissue lysates (35ug/lane). BTBD1 (arrow) was detected using the purified Pab.

BTBD1 Antibody (Center) (Cat. #AP7323c) flow cytometric analysis of 293 cells (right histogram) compared to a negative control cell (left histogram).FITC-conjugated goat-anti-rabbit secondary antibodies were used for the analysis.



Please note: All products are 'FOR RESEARCH USE ONLY. NOT FOR USE IN DIAGNOSTIC OR THERAPEUTIC PROCEDURES'.