

Nup88 Polyclonal Antibody

Catalog # AP73256

Product Information

Application	WB
Primary Accession	Q99567
Reactivity	Human, Mouse
Host	Rabbit
Clonality	Polyclonal
Calculated MW	83542

Additional Information

Gene ID	4927
Other Names	NUP88; Nuclear pore complex protein Nup88; 88 kDa nucleoporin; Nucleoporin Nup88
Dilution	WB~~Western Blot: 1/500 - 1/2000. ELISA: 1/20000. Not yet tested in other applications.
Format	Liquid in PBS containing 50% glycerol, 0.5% BSA and 0.09% (W/V) sodium azide.
Storage Conditions	-20°C

Protein Information

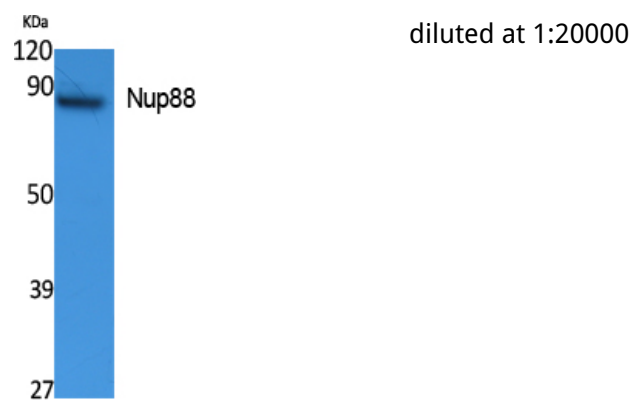
Name	NUP88
Function	Component of nuclear pore complex.
Cellular Location	Nucleus, nuclear pore complex
Tissue Location	Ubiquitous.

Background

Essential component of nuclear pore complex.

Images

Western Blot analysis of extracts from K562 cells, using Nup88 Polyclonal Antibody.. Secondary antibody was



Please note: All products are 'FOR RESEARCH USE ONLY. NOT FOR USE IN DIAGNOSTIC OR THERAPEUTIC PROCEDURES'.