

# PDP2 Polyclonal Antibody

Catalog # AP73257

## Product Information

---

Application	WB
Primary Accession	<a href="#">Q9P2J9</a>
Reactivity	Human
Host	Rabbit
Clonality	Polyclonal
Calculated MW	59978

## Additional Information

---

Gene ID	57546
Other Names	PDP2; KIAA1348; [Pyruvate dehydrogenase [acetyl-transferring]]-phosphatase 2, mitochondrial; PDP 2; Pyruvate dehydrogenase phosphatase catalytic subunit 2; PDPC 2
Dilution	WB~~Western Blot: 1/500 - 1/2000. ELISA: 1/20000. Not yet tested in other applications.
Format	Liquid in PBS containing 50% glycerol, 0.5% BSA and 0.09% (W/V) sodium azide.
Storage Conditions	-20°C

## Protein Information

---

Name	PDP2 ( <a href="#">HGNC:30263</a> )
Synonyms	KIAA1348
Function	Mitochondrial enzyme that catalyzes the dephosphorylation and concomitant reactivation of the alpha subunit of the E1 component of the pyruvate dehydrogenase complex (PDC), thereby stimulating the conversion of pyruvate into acetyl-CoA (By similarity). Acts as a crucial regulator of T cell metabolism and function, with a particular focus on T-helper Th17 (By similarity).
Cellular Location	Mitochondrion {ECO:0000250 UniProtKB:O88484}.

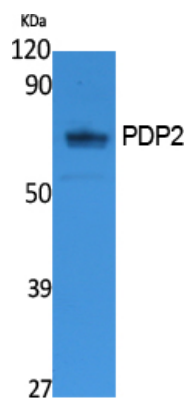
## Background

---

Catalyzes the dephosphorylation and concomitant reactivation of the alpha subunit of the E1 component of the pyruvate dehydrogenase complex.

## Images

---



Western Blot analysis of extracts from K562 cells, using PDP2 Polyclonal Antibody.. Secondary antibody was diluted at 1:20000

Please note: All products are 'FOR RESEARCH USE ONLY. NOT FOR USE IN DIAGNOSTIC OR THERAPEUTIC PROCEDURES'.