

RhCG Polyclonal Antibody

Catalog # AP73271

Product Information

Application	WB, IHC-P
Primary Accession	Q9UBD6
Reactivity	Human
Host	Rabbit
Clonality	Polyclonal
Calculated MW	53179

Additional Information

Gene ID	51458
Other Names	RHCG; C15orf6; CDRC2; PDRC2; RHGK; Ammonium transporter Rh type C; Rh glycoprotein kidney; Rhesus blood group family type C glycoprotein; Rh family type C glycoprotein; Rh type C glycoprotein; Tumor-related protein DRC2
Dilution	WB~~Western Blot: 1/500 - 1/2000. IHC-p: 1:100-300 ELISA: 1/40000. Not yet tested in other applications. IHC-P~~Western Blot: 1/500 - 1/2000. IHC-p: 1:100-300 ELISA: 1/40000. Not yet tested in other applications.
Format	Liquid in PBS containing 50% glycerol, 0.5% BSA and 0.09% (W/V) sodium azide.
Storage Conditions	-20°C

Protein Information

Name	RHCG
Synonyms	C15orf6, CDRC2, PDRC2, RHGK
Function	<p>Ammonium transporter involved in the maintenance of acid-base homeostasis. Transports ammonium and its related derivative methylammonium across the plasma membrane of epithelial cells likely contributing to renal transepithelial ammonia transport and ammonia metabolism. Postulated to primarily mediate an electroneutral bidirectional transport of NH₃ ammonia species according to a mechanism that implies interaction of an NH₄(+) ion with acidic residues of the pore entry followed by dissociation of NH₄(+) into NH₃ and H(+). As a result NH₃ transits through the central pore and is protonated on the extracellular side reforming NH₄(+) (PubMed:11062476, PubMed:14761968, PubMed:15929723, PubMed:16477434, PubMed:16580862, PubMed:24077989). May act as a CO₂ channel providing for renal acid secretion (PubMed:24077989).</p>

Cellular Location

Cell membrane; Multi-pass membrane protein. Apical cell membrane; Multi-pass membrane protein. Note=Also detected at the basolateral membrane and in subapical vesicles.

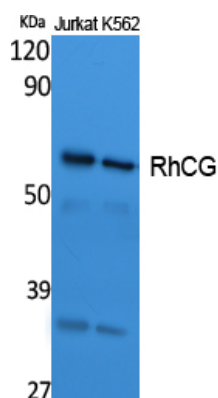
Tissue Location

Expressed in brain, testis, placenta, pancreas, esophagus and prostate. Expressed in squamous epithelial tissues (at protein level). Expressed in kidney.

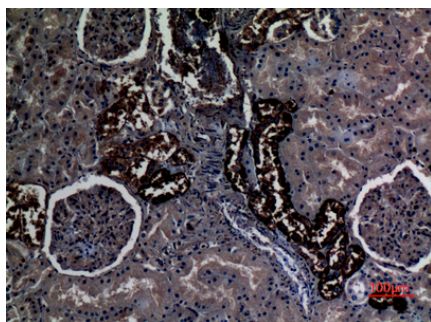
Background

Functions as an electroneutral and bidirectional ammonium transporter. May regulate transepithelial ammonia secretion.

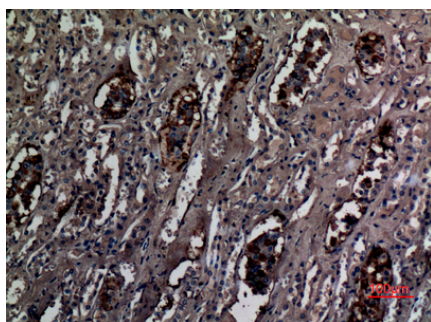
Images



Western Blot analysis of extracts from Jurkat, K562 cells, using RhCG Polyclonal Antibody.. Secondary antibody was diluted at 1:20000



Immunohistochemical analysis of paraffin-embedded human-kidney, antibody was diluted at 1:100



Immunohistochemical analysis of paraffin-embedded human-kidney, antibody was diluted at 1:100

Please note: All products are 'FOR RESEARCH USE ONLY. NOT FOR USE IN DIAGNOSTIC OR THERAPEUTIC PROCEDURES'.