

CYP2A6/7/13 Polyclonal Antibody

Catalog # AP73276

Product Information

Application	WB
Primary Accession	P11509 , P20853 , Q16696
Reactivity	Human
Host	Rabbit
Clonality	Polyclonal
Calculated MW	56517

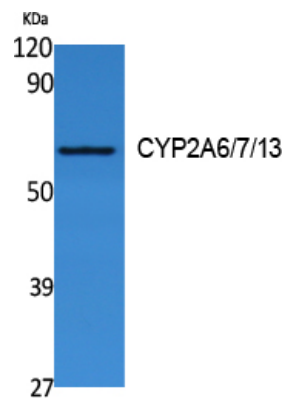
Additional Information

Gene ID	1548
Other Names	CYP2A6; CYP2A3; Cytochrome P450 2A6; 1, 4-cineole 2-exo-monooxygenase; CYP2A6; Coumarin 7-hydroxylase; Cytochrome P450 2A6; Cytochrome P450(I); CYP2A7; Cytochrome P450 2A7; CYP2A7; Cytochrome P450 2A4; CYP2A13; Cytochrome P450 2A13; CYP2A13
Dilution	WB--Western Blot: 1/500 - 1/2000. ELISA: 1/40000. Not yet tested in other applications.
Format	Liquid in PBS containing 50% glycerol, 0.5% BSA and 0.09% (W/V) sodium azide.
Storage Conditions	-20°C

Protein Information

Name	CYP2A6
Synonyms	CYP2A3
Function	Exhibits a high coumarin 7-hydroxylase activity. Can act in the hydroxylation of the anti-cancer drugs cyclophosphamide and ifosfamide. Competent in the metabolic activation of aflatoxin B1. Constitutes the major nicotine C-oxidase. Acts as a 1,4-cineole 2-exo- monooxygenase. Possesses low phenacetin O-deethylation activity.
Cellular Location	Endoplasmic reticulum membrane; Peripheral membrane protein. Microsome membrane; Peripheral membrane protein
Tissue Location	Liver.

Images



Western Blot analysis of extracts from Jurkat cells, using CYP2A6/7/13 Polyclonal Antibody.. Secondary antibody was diluted at 1:20000

Please note: All products are 'FOR RESEARCH USE ONLY. NOT FOR USE IN DIAGNOSTIC OR THERAPEUTIC PROCEDURES'.