

RASSF8 Polyclonal Antibody

Catalog # AP73283

Product Information

Application	WB
Primary Accession	Q8NHQ8
Reactivity	Human, Rat
Host	Rabbit
Clonality	Polyclonal
Calculated MW	48327

Additional Information

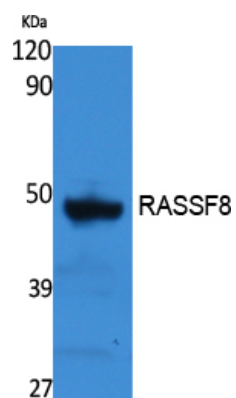
Gene ID	11228
Other Names	RASSF8; C12orf2; Ras association domain-containing protein 8; Carcinoma-associated protein HOJ-1
Dilution	WB~~Western Blot: 1/500 - 1/2000. ELISA: 1/40000. Not yet tested in other applications.
Format	Liquid in PBS containing 50% glycerol, 0.5% BSA and 0.09% (W/V) sodium azide.
Storage Conditions	-20°C

Protein Information

Name	RASSF8
Synonyms	C12orf2
Tissue Location	Widely expressed as a 6.2 kb transcript. A 2.2 kb alternatively spliced transcript is expressed exclusively in testis

Images

Western Blot analysis of extracts from rat stomach, using RASSF8 Polyclonal Antibody.. Secondary antibody was diluted at 1:20000



Please note: All products are 'FOR RESEARCH USE ONLY. NOT FOR USE IN DIAGNOSTIC OR THERAPEUTIC PROCEDURES'.