

# NPT2b Polyclonal Antibody

Catalog # AP73287

## Product Information

<b>Application</b>	WB, E
<b>Primary Accession</b>	<a href="#">O95436</a>
<b>Reactivity</b>	Human, Rat
<b>Host</b>	Rabbit
<b>Clonality</b>	Polyclonal
<b>Calculated MW</b>	75759

## Additional Information

<b>Gene ID</b>	10568
<b>Other Names</b>	SLC34A2; Sodium-dependent phosphate transport protein 2B; Sodium-phosphate transport protein 2B; Na(+)-dependent phosphate cotransporter 2B; NaPi3b; Sodium/phosphate cotransporter 2B; Na(+)/Pi cotransporter 2B; NaPi-2b; Solute carrier family 34 member 2
<b>Dilution</b>	WB~~Western Blot: 1/500 - 1/2000. ELISA: 1/20000. Not yet tested in other applications. E~~N/A
<b>Format</b>	Liquid in PBS containing 50% glycerol, 0.5% BSA and 0.09% (W/V) sodium azide.
<b>Storage Conditions</b>	-20°C

## Protein Information

<b>Name</b>	SLC34A2
<b>Function</b>	Involved in actively transporting phosphate into cells via Na(+) cotransport.
<b>Cellular Location</b>	Apical cell membrane {ECO:0000250 UniProtKB:Q9DBP0}; Multi-pass membrane protein. Note=Localized at the brush border membranes of enterocytes. {ECO:0000250 UniProtKB:Q9DBP0}
<b>Tissue Location</b>	Highly expressed in lung. Also detected in pancreas, kidney, small intestine, ovary, testis, prostate and mammary gland. In lung, it is found in alveolar type II cells but not in bronchiolar epithelium.

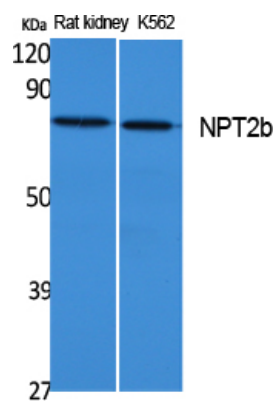
## Background

May be involved in actively transporting phosphate into cells via Na(+) cotransport. It may be the main phosphate transport protein in the intestinal brush border membrane. May have a role in the synthesis of

surfactant in lungs' alveoli.

## Images

---



Western Blot analysis of extracts from rat kidney, K562 cells, using NPT2b Polyclonal Antibody.. Secondary antibody was diluted at 1:20000

Please note: All products are 'FOR RESEARCH USE ONLY. NOT FOR USE IN DIAGNOSTIC OR THERAPEUTIC PROCEDURES'.