

# MME Antibody (Center)

Purified Rabbit Polyclonal Antibody (Pab)

Catalog # AP7329c

## Product Information

---

<b>Application</b>	IF, WB, E
<b>Primary Accession</b>	<a href="#">P08473</a>
<b>Other Accession</b>	<a href="#">P07861</a> , <a href="#">Q61391</a>
<b>Reactivity</b>	Human, Rat, Mouse
<b>Predicted</b>	Rat
<b>Host</b>	Rabbit
<b>Clonality</b>	Polyclonal
<b>Isotype</b>	Rabbit IgG
<b>Clone Names</b>	RB18820
<b>Calculated MW</b>	85514
<b>Antigen Region</b>	274-302

## Additional Information

---

<b>Gene ID</b>	4311
<b>Other Names</b>	Neprilysin, Atriopeptidase, Common acute lymphocytic leukemia antigen, CALLA, Enkephalinase, Neutral endopeptidase 2411, NEP, Neutral endopeptidase, Skin fibroblast elastase, SFE, CD10, MME, EPN
<b>Target/Specificity</b>	This MME antibody is generated from rabbits immunized with a KLH conjugated synthetic peptide between 274-302 amino acids from the Central region of human MME.
<b>Dilution</b>	IF~~1:10~50 WB~~1:1000 E~~Use at an assay dependent concentration.
<b>Format</b>	Purified polyclonal antibody supplied in PBS with 0.09% (W/V) sodium azide. This antibody is prepared by Saturated Ammonium Sulfate (SAS) precipitation followed by dialysis against PBS.
<b>Storage</b>	Maintain refrigerated at 2-8°C for up to 2 weeks. For long term storage store at -20°C in small aliquots to prevent freeze-thaw cycles.
<b>Precautions</b>	MME Antibody (Center) is for research use only and not for use in diagnostic or therapeutic procedures.

## Protein Information

---

<b>Name</b>	MME {ECO:0000303 PubMed:27588448, ECO:0000312 HGNC:HGNC:7154}
<b>Function</b>	Thermolysin-like specificity, but is almost confined on acting on

polypeptides of up to 30 amino acids (PubMed:[15283675](#), PubMed:[6208535](#), PubMed:[6349683](#), PubMed:[8168535](#)). Biologically important in the destruction of opioid peptides such as Met- and Leu-enkephalins by cleavage of a Gly-Phe bond (PubMed:[17101991](#), PubMed:[6349683](#)). Catalyzes cleavage of bradykinin, substance P and neurotensin peptides (PubMed:[6208535](#)). Able to cleave angiotensin-1, angiotensin-2 and angiotensin 1-9 (PubMed:[15283675](#), PubMed:[6349683](#)). Involved in the degradation of atrial natriuretic factor (ANF) and brain natriuretic factor (BNP(1-32)) (PubMed:[16254193](#), PubMed:[2531377](#), PubMed:[2972276](#)). Displays UV-inducible elastase activity toward skin preelastic and elastic fibers (PubMed:[20876573](#)).

#### Cellular Location

Cell membrane; Single-pass type II membrane protein

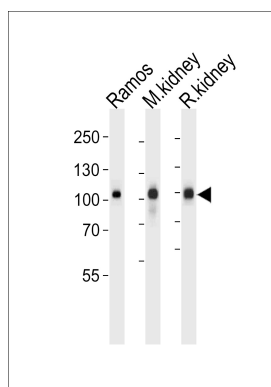
## Background

MME is a common acute lymphocytic leukemia antigen that is an important cell surface marker in the diagnosis of human acute lymphocytic leukemia (ALL). This protein is present on leukemic cells of pre-B phenotype, which represent 85% of cases of ALL. This protein is not restricted to leukemic cells, however, and is found on a variety of normal tissues. It is a oprotein that is particularly abundant in kidney, where it is present on the brush border of proximal tubules and on glomerular epithelium. The protein is a neutral endopeptidase that cleaves peptides at the amino side of hydrophobic residues and inactivates several peptide hormones including glucagon, enkephalins, substance P, neurotensin, oxytocin, and bradykinin.

## References

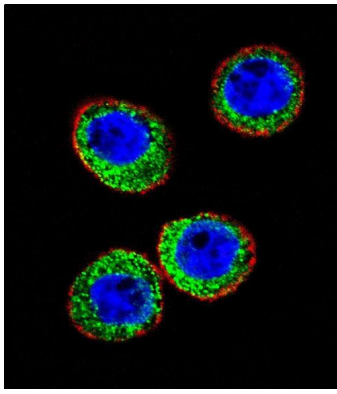
Dakka,N., Bellaoui,H. *Pediatr Hematol Oncol* 26 (4), 216-231 (2009)  
Wang,R., Wang,S. J. *Neurochem.* 108 (4), 1072-1082 (2009)  
Shipp,M.A. *Proc. Natl. Acad. Sci. U.S.A.* 88 (23), 10662-10666 (1991)  
Shipp,M.A. *Proc. Natl. Acad. Sci. U.S.A.* 86 (1), 297-301 (1989)

## Images



Western blot analysis of lysates from Ramos cell line, mouse kidney and rat kidney tissue (from left to right), using Nephrilysin Antibody (Center)(Cat. #AP7329c). AP7329c was diluted at 1:1000 at each lane. A goat anti-rabbit IgG H&L(HRP) at 1:5000 dilution was used as the secondary antibody. Lysates at 35ug per lane.

Confocal immunofluorescent analysis of MME Antibody (Center)(Cat#AP7329c) with WiDr cell followed by Alexa Fluor 488-conjugated goat anti-rabbit IgG (green). Actin filaments have been labeled with Alexa Fluor 555 phalloidin (red). DAPI was used to stain the cell nuclear (blue).



Please note: All products are 'FOR RESEARCH USE ONLY. NOT FOR USE IN DIAGNOSTIC OR THERAPEUTIC PROCEDURES'.