

# HNF-4 $\alpha$ /y Polyclonal Antibody

Catalog # AP73301

## Product Information

---

Application	WB, IHC-P
Primary Accession	<a href="#">P41235</a>
Reactivity	Human, Mouse, Rat
Host	Rabbit
Clonality	Polyclonal
Calculated MW	52785

## Additional Information

---

Gene ID	3172
Other Names	HNF4A; HNF4; NR2A1; TCF14; Hepatocyte nuclear factor 4-alpha; HNF-4-alpha; Nuclear receptor subfamily 2 group A member 1; Transcription factor 14; TCF-14;Transcription factor HNF-4; HNF4G; NR2A2; Hepatocyte nuclear factor 4-gamma; HNF-4-gamma; Nuclear receptor subfamily 2 group A member 2
Dilution	WB~~Western Blot: 1/500 - 1/2000. IHC-p: 1:100-300 ELISA: 1/20000. Not yet tested in other applications. IHC-P~~Western Blot: 1/500 - 1/2000. IHC-p: 1:100-300 ELISA: 1/20000. Not yet tested in other applications.
Format	Liquid in PBS containing 50% glycerol, 0.5% BSA and 0.09% (W/V) sodium azide.
Storage Conditions	-20°C

## Protein Information

---

Name	HNF4A
Synonyms	HNF4, NR2A1, TCF14
Function	Transcriptional regulator which controls the expression of hepatic genes during the transition of endodermal cells to hepatic progenitor cells, facilitating the recruitment of RNA pol II to the promoters of target genes (PubMed: <a href="#">30597922</a> ). Activates the transcription of CYP2C38 (By similarity). Represses the CLOCK-BMAL1 transcriptional activity and is essential for circadian rhythm maintenance and period regulation in the liver and colon cells (PubMed: <a href="#">30530698</a> ).
Cellular Location	Nucleus.

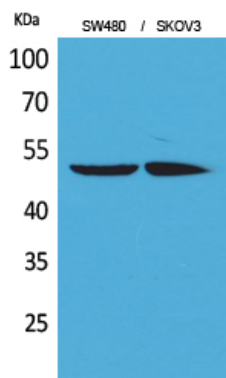
## Background

---

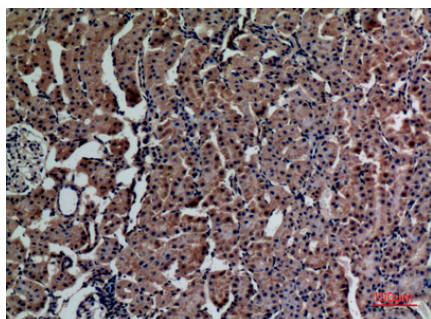
Transcriptionally controlled transcription factor. Binds to DNA sites required for the transcription of alpha 1- antitrypsin, apolipoprotein CIII, transthyretin genes and HNF1- alpha. May be essential for development of the liver, kidney and intestine.

## Images

---



Western Blot analysis of SW480, SKOV3 cells using HNF-4 $\alpha$ / $\gamma$  Polyclonal Antibody.. Secondary antibody was diluted at 1:20000



Immunohistochemical analysis of paraffin-embedded rat-kidney, antibody was diluted at 1:100

Please note: All products are 'FOR RESEARCH USE ONLY. NOT FOR USE IN DIAGNOSTIC OR THERAPEUTIC PROCEDURES'.