

CD163 Antibody (N-term)

Purified Rabbit Polyclonal Antibody (Pab)

Catalog # AP7330a

Product Information

Application	WB, IHC-P, E
Primary Accession	Q86VB7
Reactivity	Human
Host	Rabbit
Clonality	Polyclonal
Isotype	Rabbit IgG
Clone Names	RB18866
Calculated MW	125451
Antigen Region	245-274

Additional Information

Gene ID	9332
Other Names	Scavenger receptor cysteine-rich type 1 protein M130, Hemoglobin scavenger receptor, CD163, Soluble CD163, sCD163, CD163, M130
Target/Specificity	This CD163 antibody is generated from rabbits immunized with a KLH conjugated synthetic peptide between 245-274 amino acids from the N-terminal region of human CD163.
Dilution	WB~~1:1000 IHC-P~~1:100~500 E~~Use at an assay dependent concentration.
Format	Purified polyclonal antibody supplied in PBS with 0.09% (W/V) sodium azide. This antibody is prepared by Saturated Ammonium Sulfate (SAS) precipitation followed by dialysis against PBS.
Storage	Maintain refrigerated at 2-8°C for up to 2 weeks. For long term storage store at -20°C in small aliquots to prevent freeze-thaw cycles.
Precautions	CD163 Antibody (N-term) is for research use only and not for use in diagnostic or therapeutic procedures.

Protein Information

Name	CD163
Synonyms	M130
Function	Acute phase-regulated receptor involved in clearance and endocytosis of hemoglobin/haptoglobin complexes by macrophages and may thereby

protect tissues from free hemoglobin-mediated oxidative damage. May play a role in the uptake and recycling of iron, via endocytosis of hemoglobin/haptoglobin and subsequent breakdown of heme. Binds hemoglobin/haptoglobin complexes in a calcium-dependent and pH-dependent manner. Exhibits a higher affinity for complexes of hemoglobin and multimeric haptoglobin of HP*1F phenotype than for complexes of hemoglobin and dimeric haptoglobin of HP*1S phenotype. Induces a cascade of intracellular signals that involves tyrosine kinase-dependent calcium mobilization, inositol triphosphate production and secretion of IL6 and CSF1. Isoform 3 exhibits the higher capacity for ligand endocytosis and the more pronounced surface expression when expressed in cells.

Cellular Location

[Soluble CD163]: Secreted

Tissue Location

Expressed in monocytes and mature macrophages such as Kupffer cells in the liver, red pulp macrophages in the spleen, cortical macrophages in the thymus, resident bone marrow macrophages and meningeal macrophages of the central nervous system. Expressed also in blood. Isoform 1 is the lowest abundant in the blood. Isoform 2 is the lowest abundant in the liver and the spleen. Isoform 3 is the predominant isoform detected in the blood

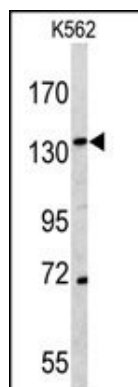
Background

CD163 is an acute phase-regulated receptor involved in clearance and endocytosis of hemoglobin/haptoglobin complexes by macrophages and may thereby protect tissues from free hemoglobin-mediated oxidative damage. The protein may play a role in the uptake and recycling of iron, via endocytosis of hemoglobin/haptoglobin and subsequent breakdown of heme. It binds hemoglobin/haptoglobin complexes in a calcium-dependent and pH-dependent manner. And it exhibits a higher affinity for complexes of hemoglobin and multimeric haptoglobin of HP*1F phenotype than for complexes of hemoglobin and dimeric haptoglobin of HP*1S phenotype. It also induces a cascade of intracellular signals that involves tyrosine kinase-dependent calcium mobilization, inositol triphosphate production and secretion of IL6 and CSF1.

References

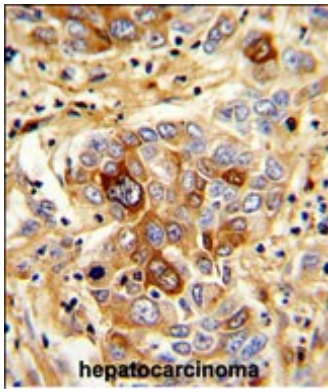
- Buehler,P.W., Abraham,B. Blood 113 (11), 2578-2586 (2009)
Fabriek,B.O., van Bruggen,R. Blood 113 (4), 887-892 (2009)
Strauss,M. and Levy,A.P. Mol. Cell. Biochem. 317 (1-2), 131-135 (2008)
Groselj-Grenc,M., Ihan,A. Mediators Inflamm. 2008, 202646 (2008)

Images



Western blot analysis of CD163 antibody (N-term) (Cat.#AP7330a) in K562 cell line lysates (35ug/lane). CD163 (arrow) was detected using the purified Pab.

Formalin-fixed and paraffin-embedded human



hepatocarcinoma with CD163 Antibody (N-term), which was peroxidase-conjugated to the secondary antibody, followed by DAB staining. This data demonstrates the use of this antibody for immunohistochemistry; clinical relevance has not been evaluated.

Please note: All products are 'FOR RESEARCH USE ONLY. NOT FOR USE IN DIAGNOSTIC OR THERAPEUTIC PROCEDURES'.