

Hepassocin Polyclonal Antibody

Catalog # AP73310

Product Information

Application	WB, IHC-P
Primary Accession	Q08830
Reactivity	Human, Mouse, Rat
Host	Rabbit
Clonality	Polyclonal
Calculated MW	36379

Additional Information

Gene ID	2267
Other Names	FGL1; HFREP1; Fibrinogen-like protein 1; HP-041; Hepassocin; Hepatocyte-derived fibrinogen-related protein 1; HFREP-1; Liver fibrinogen-related protein 1; LFIRE-1
Dilution	WB~~Western Blot: 1/500 - 1/2000. IHC-p: 1:100-300 ELISA: 1/20000. Not yet tested in other applications. IHC-P~~N/A
Format	Liquid in PBS containing 50% glycerol, 0.5% BSA and 0.09% (W/V) sodium azide.
Storage Conditions	-20°C

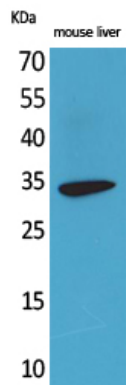
Protein Information

Name	FGL1 {ECO:0000303 PubMed:18039467, ECO:0000312 HGNC:HGNC:3695}
Function	Immune suppressive molecule that inhibits antigen-specific T- cell activation by acting as a major ligand of LAG3 (PubMed: 30580966). Responsible for LAG3 T-cell inhibitory function (PubMed: 30580966). Binds LAG3 independently from MHC class II (MHC-II) (PubMed: 30580966). Secreted by, and promotes growth of, hepatocytes (PubMed: 11470158 , PubMed: 19880967).
Cellular Location	Secreted. Note=Secreted in the blood plasma
Tissue Location	Under normal conditions, liver-specific.

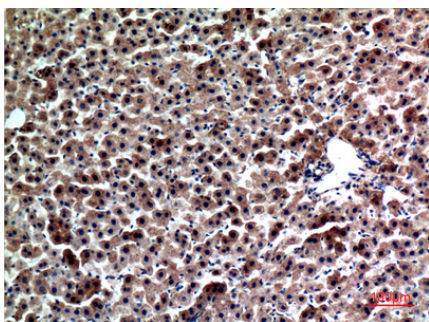
Background

Has hepatocyte mitogenic activity.

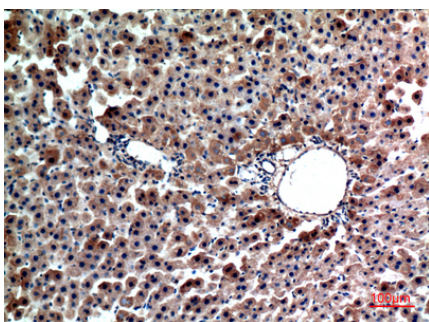
Images



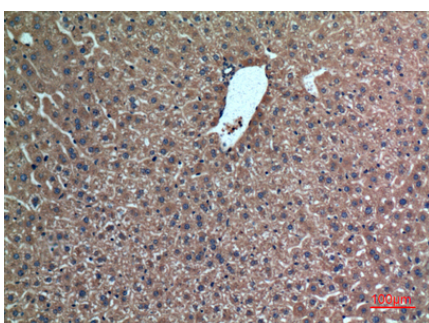
Western Blot analysis of mouse liver cells using Hepassocin Polyclonal Antibody.. Secondary antibody was diluted at 1:20000



Immunohistochemical analysis of paraffin-embedded rat-liver, antibody was diluted at 1:100



Immunohistochemical analysis of paraffin-embedded rat-liver, antibody was diluted at 1:100



Immunohistochemical analysis of paraffin-embedded mouse-liver, antibody was diluted at 1:100

Please note: All products are 'FOR RESEARCH USE ONLY. NOT FOR USE IN DIAGNOSTIC OR THERAPEUTIC PROCEDURES'.