

# L-Selectin Polyclonal Antibody

Catalog # AP73313

## Product Information

---

Application	WB, IHC-P
Primary Accession	<a href="#">P14151</a>
Reactivity	Human, Mouse, Rat
Host	Rabbit
Clonality	Polyclonal
Calculated MW	42187

## Additional Information

---

Gene ID	6402
Other Names	SELL; LNHR; LYAM1; L-selectin; CD62 antigen-like family member L; Leukocyte adhesion molecule 1; LAM-1; Leukocyte surface antigen Leu-8; Leukocyte-endothelial cell adhesion molecule 1; LECAM1; Lymph node homing receptor; TQ1; gp90-MEL; CD62L
Dilution	WB~~Western Blot: 1/500 - 1/2000. IHC-p: 1:100-300 ELISA: 1/20000. Not yet tested in other applications. IHC-P~~Western Blot: 1/500 - 1/2000. IHC-p: 1:100-300 ELISA: 1/20000. Not yet tested in other applications.
Format	Liquid in PBS containing 50% glycerol, 0.5% BSA and 0.09% (W/V) sodium azide.
Storage Conditions	-20°C

## Protein Information

---

Name	SELL
Synonyms	LNHR, LYAM1
Function	Calcium-dependent lectin that mediates cell adhesion by binding to glycoproteins on neighboring cells (PubMed: <a href="#">12403782</a> , PubMed: <a href="#">28011641</a> , PubMed: <a href="#">28489325</a> ). Mediates the adherence of lymphocytes to endothelial cells of high endothelial venules in peripheral lymph nodes. Promotes initial tethering and rolling of leukocytes in endothelia (PubMed: <a href="#">12403782</a> , PubMed: <a href="#">28011641</a> ).
Cellular Location	Cell membrane; Single-pass type I membrane protein
Tissue Location	Expressed in B-cell lines and T-lymphocytes.

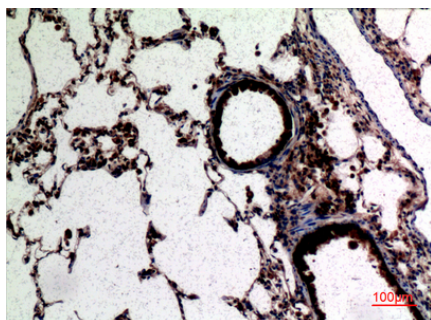
## Background

Calcium-dependent lectin that mediates cell adhesion by binding to glycoproteins on neighboring cells (PubMed:[12403782](#), PubMed:[28489325](#), PubMed:[28011641](#)). Mediates the adherence of lymphocytes to endothelial cells of high endothelial venules in peripheral lymph nodes. Promotes initial tethering and rolling of leukocytes in endothelia (PubMed:[12403782](#), PubMed:[28011641](#)).

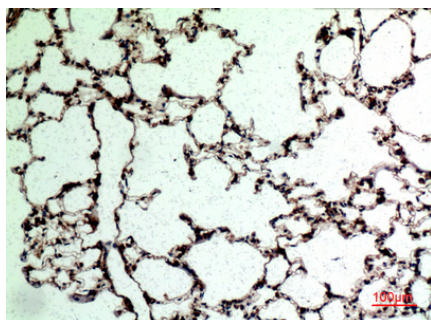
## Images



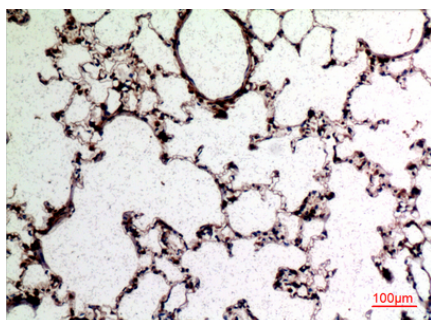
Western Blot analysis of K562 cells using L-Selectin Polyclonal Antibody.. Secondary antibody was diluted at 1:20000



Immunohistochemical analysis of paraffin-embedded rat-lung, antibody was diluted at 1:100

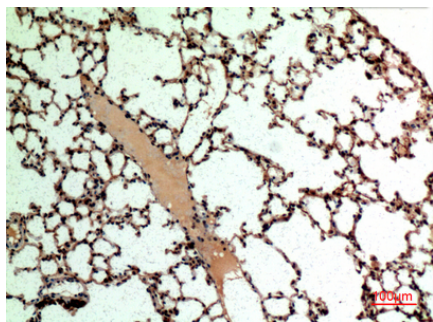
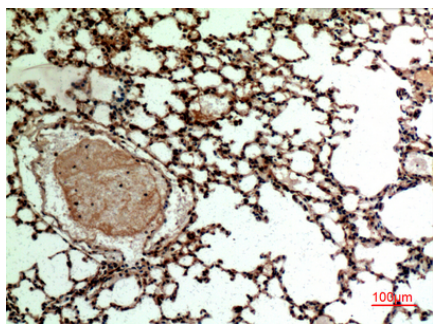


Immunohistochemical analysis of paraffin-embedded rat-lung, antibody was diluted at 1:100



Immunohistochemical analysis of paraffin-embedded rat-lung, antibody was diluted at 1:100

Immunohistochemical analysis of paraffin-embedded mouse-lung, antibody was diluted at 1:100



Immunohistochemical analysis of paraffin-embedded mouse-lung, antibody was diluted at 1:100

Please note: All products are 'FOR RESEARCH USE ONLY. NOT FOR USE IN DIAGNOSTIC OR THERAPEUTIC PROCEDURES'.