

PREP Polyclonal Antibody

Catalog # AP73315

Product Information

Application	WB, IHC-P
Primary Accession	Q8N6D4
Reactivity	Human, Mouse, Rat
Host	Rabbit
Clonality	Polyclonal

Additional Information

Other Names	PREP; PEP; Prolyl endopeptidase; PE; Post-proline cleaving enzyme
Dilution	WB~Western Blot: 1/500 - 1/2000. IHC-p: 1:100-300 ELISA: 1/20000. Not yet tested in other applications. IHC-P~N/A
Format	Liquid in PBS containing 50% glycerol, 0.5% BSA and 0.09% (W/V) sodium azide.
Storage Conditions	-20°C

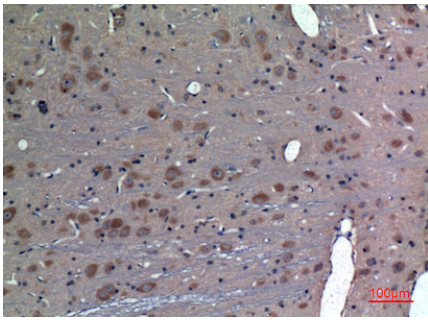
Protein Information

Images

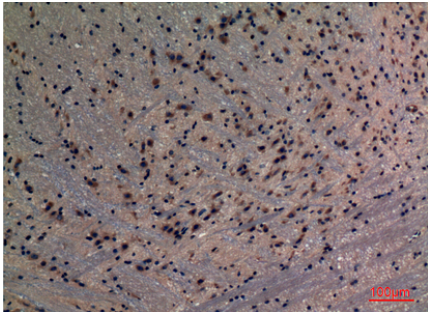


Western Blot analysis of Jurkat cells using PREP Polyclonal Antibody.. Secondary antibody was diluted at 1:20000

Immunohistochemical analysis of paraffin-embedded rat-brain, antibody was diluted at 1:100



Immunohistochemical analysis of paraffin-embedded mouse-brain, antibody was diluted at 1:100



Please note: All products are 'FOR RESEARCH USE ONLY. NOT FOR USE IN DIAGNOSTIC OR THERAPEUTIC PROCEDURES'.