

ET-1 Polyclonal Antibody

Catalog # AP73330

Product Information

| | |
|-------------------|------------------------|
| Application | WB, IHC-P |
| Primary Accession | P05305 |
| Reactivity | Human |
| Host | Rabbit |
| Clonality | Polyclonal |
| Calculated MW | 24425 |

Additional Information

| | |
|--------------------|---|
| Gene ID | 1906 |
| Other Names | EDN1; Endothelin-1; Preproendothelin-1; PPET1 |
| Dilution | WB~~IHC-p: 100-300.Western Blot: 1/500 - 1/2000. ELISA: 1/20000. Not yet tested in other applications. IHC-P~~N/A |
| Format | Liquid in PBS containing 50% glycerol, 0.5% BSA and 0.09% (W/V) sodium azide. |
| Storage Conditions | -20°C |

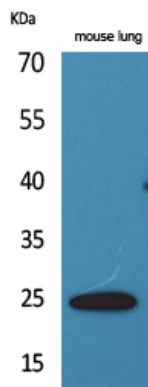
Protein Information

| | |
|-------------------|---|
| Name | EDN1 |
| Function | Endothelins are endothelium-derived vasoconstrictor peptides (By similarity). Probable ligand for G-protein coupled receptors EDNRA and EDNRB which activates PTK2B, BCAR1, BCAR3 and, GTPases RAP1 and RHOA cascade in glomerular mesangial cells (PubMed: 19086031). Also binds the DEAR/FBXW7-AS1 receptor (PubMed: 17446437). Promotes mesenteric arterial wall remodeling via activation of ROCK signaling and subsequent colocalization of NFATC3 with F-actin filaments (By similarity). NFATC3 then translocates to the nucleus where it subsequently promotes the transcription of the smooth muscle hypertrophy and differentiation marker ACTA2 (By similarity). |
| Cellular Location | Secreted. |
| Tissue Location | Expressed in lung, placental stem villi vessels and in cultured placental vascular smooth muscle cells |

Background

Endothelins are endothelium-derived vasoconstrictor peptides.

Images



Western Blot analysis of mouse lung cells using ET-1 Polyclonal Antibody.. Secondary antibody was diluted at 1:20000

Please note: All products are 'FOR RESEARCH USE ONLY. NOT FOR USE IN DIAGNOSTIC OR THERAPEUTIC PROCEDURES'.