

FGF-20 Polyclonal Antibody

Catalog # AP73361

Product Information

Application	WB, IHC-P, IF, ICC, E
Primary Accession	Q9NP95
Reactivity	Human, Mouse, Rat
Host	Rabbit
Clonality	Polyclonal
Calculated MW	23499

Additional Information

Gene ID	26281
Other Names	FGF20; Fibroblast growth factor 20; FGF-20
Dilution	WB~~Western Blot: 1/500 - 1/2000. IHC-p: 1:100-300 ELISA: 1/20000. Not yet tested in other applications. IHC-P~~Western Blot: 1/500 - 1/2000. IHC-p: 1:100-300 ELISA: 1/20000. Not yet tested in other applications. IF~~1:50~200 ICC~~N/A E~~N/A
Format	Liquid in PBS containing 50% glycerol, 0.5% BSA and 0.09% (W/V) sodium azide.
Storage Conditions	-20°C

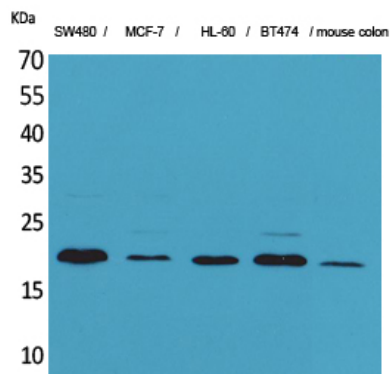
Protein Information

Name	FGF20
Function	Neurotrophic factor that regulates central nervous development and function.
Cellular Location	Secreted.
Tissue Location	Predominantly expressed in the cerebellum.

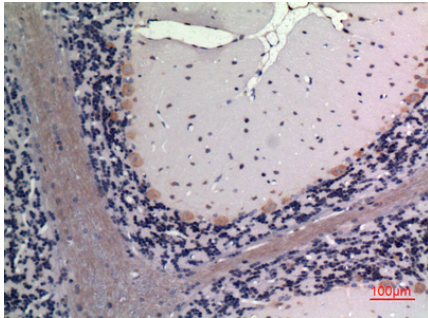
Background

Neurotrophic factor that regulates central nervous development and function.

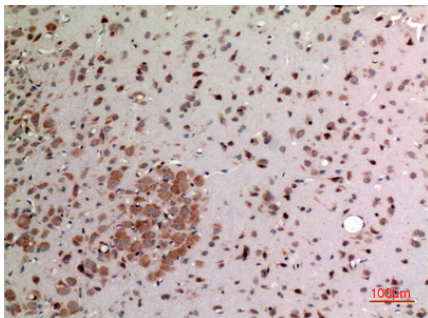
Images



Western Blot analysis of SW480, MCF-7, HL-60, BT474, mouse colon cells using FGF-20 Polyclonal Antibody.. Secondary antibody was diluted at 1:20000



Immunohistochemical analysis of paraffin-embedded rat-brain, antibody was diluted at 1:100



Immunohistochemical analysis of paraffin-embedded rat-brain, antibody was diluted at 1:100

Please note: All products are 'FOR RESEARCH USE ONLY. NOT FOR USE IN DIAGNOSTIC OR THERAPEUTIC PROCEDURES'.