

Aldolase C Polyclonal Antibody

Catalog # AP73367

Product Information

Application	WB, IHC-P, IF, ICC, E
Primary Accession	P09972
Reactivity	Human, Mouse, Rat
Host	Rabbit
Clonality	Polyclonal
Calculated MW	39456

Additional Information

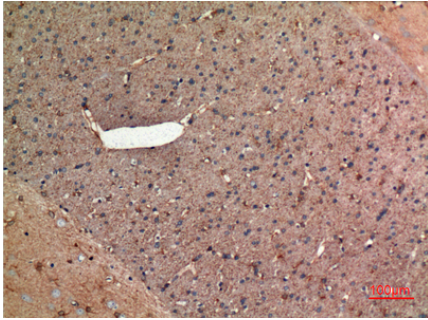
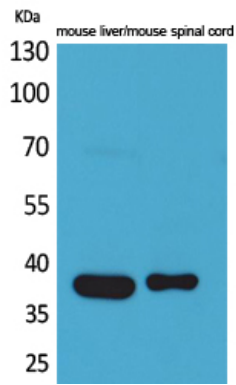
Gene ID	230
Other Names	ALDOC; ALDC; Fructose-bisphosphate aldolase C; Brain-type aldolase
Dilution	WB--Western Blot: 1/500 - 1/2000. IHC-p: 1:100-300 ELISA: 1/20000. Not yet tested in other applications. IHC-P--Western Blot: 1/500 - 1/2000. IHC-p: 1:100-300 ELISA: 1/20000. Not yet tested in other applications. IF--1:50~200 ICC--N/A E--N/A
Format	Liquid in PBS containing 50% glycerol, 0.5% BSA and 0.09% (W/V) sodium azide.
Storage Conditions	-20°C

Protein Information

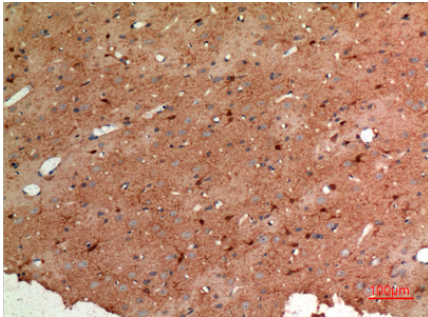
Name	ALDOC (HGNC:418)
Synonyms	ALDC
Function	Catalyzes the reversible conversion of beta-D-fructose 1,6- bisphosphate (FBP) into two triose phosphate and plays a key role in glycolysis and gluconeogenesis.

Images

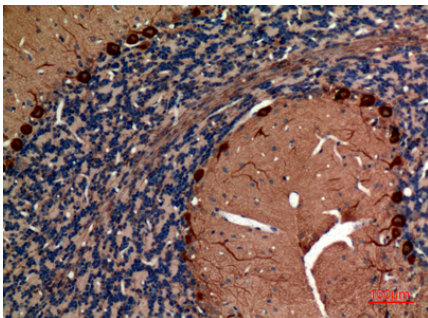
Western Blot analysis of mouse liver, mouse spinal cord cells using Aldolase C Polyclonal Antibody.. Secondary antibody was diluted at 1:20000



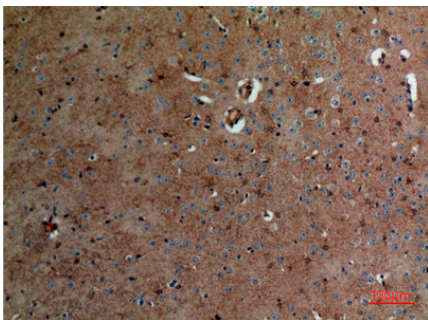
Immunohistochemical analysis of paraffin-embedded rat-brain, antibody was diluted at 1:100



Immunohistochemical analysis of paraffin-embedded rat-brain, antibody was diluted at 1:100



Immunohistochemical analysis of paraffin-embedded rat-brain, antibody was diluted at 1:100



Immunohistochemical analysis of paraffin-embedded mouse-brain, antibody was diluted at 1:100

Please note: All products are 'FOR RESEARCH USE ONLY. NOT FOR USE IN DIAGNOSTIC OR THERAPEUTIC PROCEDURES'.