

# Angptl1/2 Polyclonal Antibody

Catalog # AP73370

## Product Information

---

<b>Application</b>	WB, E
<b>Primary Accession</b>	<a href="#">O95841</a>
<b>Reactivity</b>	Human, Mouse, Rat
<b>Host</b>	Rabbit
<b>Clonality</b>	Polyclonal
<b>Calculated MW</b>	56720

## Additional Information

---

<b>Gene ID</b>	9068
<b>Other Names</b>	ANGPTL1; ANG3; ANGPT3; ARP1; PSEC0154; Angiopoietin-related protein 1; Angiopoietin-3; ANG-3; Angiopoietin-like protein 1; ANGPTL2; ARP2; Angiopoietin-related protein 2; Angiopoietin-like protein 2
<b>Dilution</b>	WB~~Western Blot: 1/500 - 1/2000. ELISA: 1/20000. Not yet tested in other applications. E~~N/A
<b>Format</b>	Liquid in PBS containing 50% glycerol, 0.5% BSA and 0.09% (W/V) sodium azide.
<b>Storage Conditions</b>	-20°C

## Protein Information

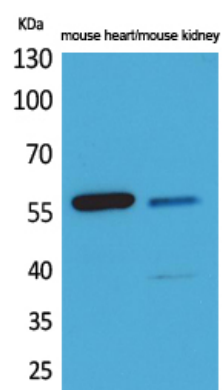
---

<b>Name</b>	ANGPTL1
<b>Synonyms</b>	ANG3, ANGPT3, ARP1
<b>Cellular Location</b>	Secreted.
<b>Tissue Location</b>	Highly expressed in adrenal gland, placenta, thyroid gland, heart, skeletal muscle and small intestine. Weakly expressed in testis, ovary, colon, pancreas, kidney and stomach

## Images

---

Western Blot analysis of mouse heart, mouse kidney cells using Angptl1/2 Polyclonal Antibody.. Secondary antibody was diluted at 1:20000



Please note: All products are 'FOR RESEARCH USE ONLY. NOT FOR USE IN DIAGNOSTIC OR THERAPEUTIC PROCEDURES'.