

IL-1 β Polyclonal Antibody

Catalog # AP73384

Product Information

Application	WB, IHC-P, IF, E
Primary Accession	P01584
Reactivity	Human, Mouse, Rat
Host	Rabbit
Clonality	Polyclonal
Calculated MW	30748

Additional Information

Gene ID	3553
Other Names	IL1B; IL1F2; Interleukin-1 beta; IL-1 beta; Catabolin
Dilution	WB~~Western Blot: 1/500 - 1/2000. IHC-p: 1:100-300 ELISA: 1/20000. Not yet tested in other applications. IHC-P~~N/A IF~~1:50~200 E~~N/A
Format	Liquid in PBS containing 50% glycerol, 0.5% BSA and 0.09% (W/V) sodium azide.
Storage Conditions	-20°C

Protein Information

Name	IL1B (HGNC:5992)
Synonyms	IL1F2
Function	Potent pro-inflammatory cytokine (PubMed: 10653850 , PubMed: 12794819 , PubMed: 28331908 , PubMed: 3920526). Initially discovered as the major endogenous pyrogen, induces prostaglandin synthesis, neutrophil influx and activation, T-cell activation and cytokine production, B-cell activation and antibody production, and fibroblast proliferation and collagen production (PubMed: 3920526). Promotes Th17 differentiation of T-cells. Synergizes with IL12/interleukin-12 to induce IFNG synthesis from T-helper 1 (Th1) cells (PubMed: 10653850). Plays a role in angiogenesis by inducing VEGF production synergistically with TNF and IL6 (PubMed: 12794819). Involved in transduction of inflammation downstream of pyroptosis: its mature form is specifically released in the extracellular milieu by passing through the gasdermin-D (GSDMD) pore (PubMed: 33377178 , PubMed: 33883744). Acts as a sensor of S.pyogenes infection in skin: cleaved and activated by pyogenes SpeB protease, leading to an inflammatory response that prevents bacterial growth during invasive skin infection (PubMed: 28331908).

Cellular Location

Cytoplasm, cytosol. Secreted. Lysosome Secreted, extracellular exosome {ECO:0000250|UniProtKB:P10749} Note=The precursor is cytosolic (PubMed:15192144). In response to inflammasome-activating signals, such as ATP for NLRP3 inflammasome or bacterial flagellin for NLRC4 inflammasome, cleaved and secreted (PubMed:24201029, PubMed:33377178, PubMed:33883744). Mature form is secreted and released in the extracellular milieu by passing through the gasdermin-D (GSDMD) pore (PubMed:33883744). In contrast, the precursor form is not released, due to the presence of an acidic region that is proteolytically removed by CASP1 during maturation (PubMed:33883744). The secretion is dependent on protein unfolding and facilitated by the cargo receptor TMED10 (PubMed:32272059)

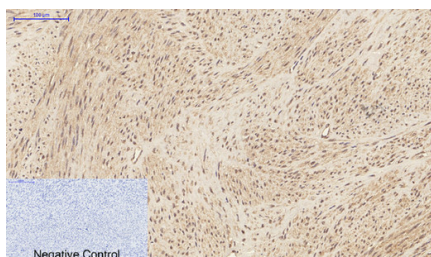
Tissue Location

Expressed in activated monocytes/macrophages (at protein level).

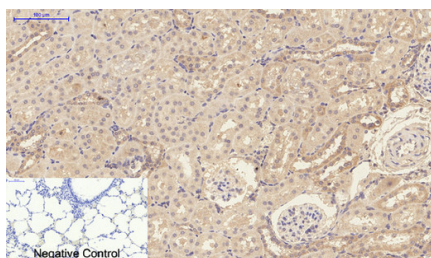
Background

Potent proinflammatory cytokine. Initially discovered as the major endogenous pyrogen, induces prostaglandin synthesis, neutrophil influx and activation, T-cell activation and cytokine production, B-cell activation and antibody production, and fibroblast proliferation and collagen production. Promotes Th17 differentiation of T-cells. Synergizes with IL12/interleukin-12 to induce IFNG synthesis from T-helper 1 (Th1) cells (PubMed:[10653850](#)).

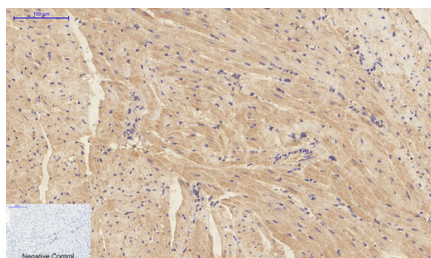
Images



Immunohistochemical analysis of paraffin-embedded Human-uterus tissue. 1,IL-1 β Polyclonal Antibody was diluted at 1:200(4°C,overnight). 2, Sodium citrate pH 6.0 was used for antibody retrieval(>98°C,20min). 3,Secondary antibody was diluted at 1:200(room temperature, 30min). Negative control was used by secondary antibody only.

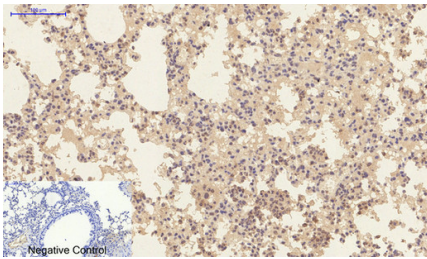


Immunohistochemical analysis of paraffin-embedded Rat-lung tissue. 1,IL-1 β Polyclonal Antibody was diluted at 1:200(4°C,overnight). 2, Sodium citrate pH 6.0 was used for antibody retrieval(>98°C,20min). 3,Secondary antibody was diluted at 1:200(room temperature, 30min). Negative control was used by secondary antibody only.

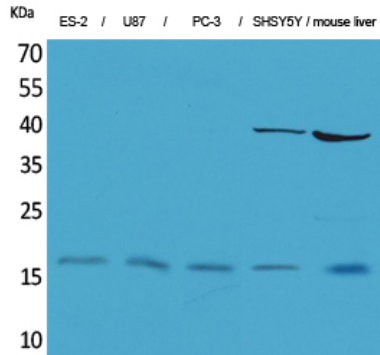


Immunohistochemical analysis of paraffin-embedded Mouse-heart tissue. 1,IL-1 β Polyclonal Antibody was diluted at 1:200(4°C,overnight). 2, Sodium citrate pH 6.0 was used for antibody retrieval(>98°C,20min). 3,Secondary antibody was diluted at 1:200(room temperature, 30min). Negative control was used by secondary antibody only.

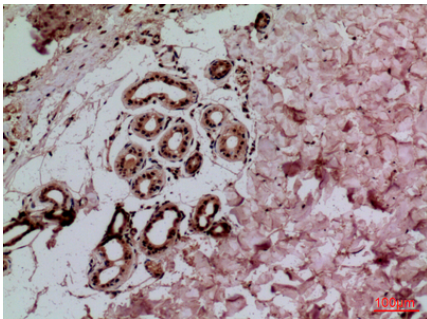
Immunohistochemical analysis of paraffin-embedded Mouse-lung tissue. 1,IL-1 β Polyclonal Antibody was diluted at 1:200(4°C,overnight). 2, Sodium citrate pH 6.0 was used for antibody retrieval(>98°C,20min). 3,Secondary antibody was diluted at 1:200(room temperature, 30min). Negative control was used by



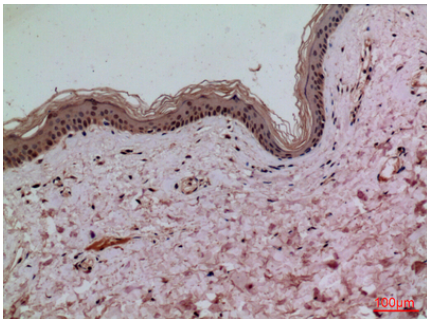
secondary antibody only.



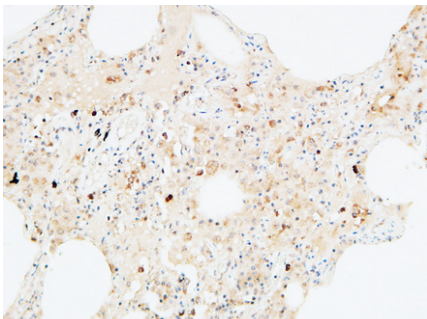
Western Blot analysis of ES-2, U87, PC-3, SHSY5Y, mouse liver cells using IL-1 β Polyclonal Antibody. Antibody was diluted at 1:2000. Secondary antibody was diluted at 1:20000



Immunohistochemical analysis of paraffin-embedded human-skin, antibody was diluted at 1:100

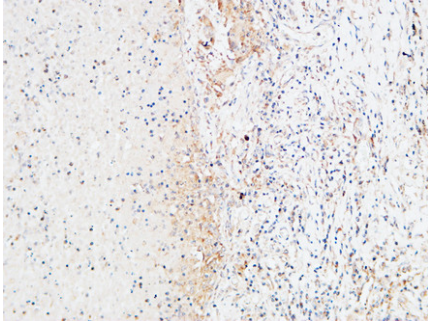
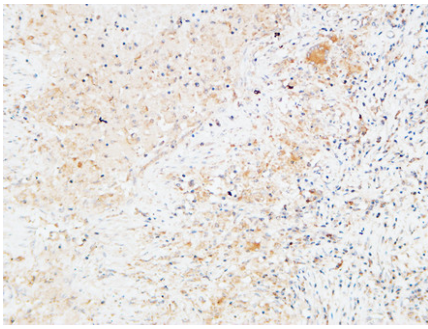


Immunohistochemical analysis of paraffin-embedded human-skin, antibody was diluted at 1:100

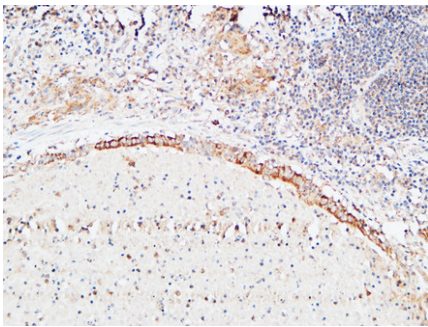


Immunohistochemical analysis of paraffin-embedded Human lung. 1, Antibody was diluted at 1:200(4°,overnight). 2, High-pressure and temperature EDTA, pH8.0 was used for antigen retrieval. 3,Secondary antibody was diluted at 1:200(room temperature, 30min).

Immunohistochemical analysis of paraffin-embedded Human lung. 1, Antibody was diluted at 1:200(4°,overnight). 2, High-pressure and temperature EDTA, pH8.0 was used for antigen retrieval. 3,Secondary antibody was diluted at 1:200(room temperature, 30min).



Immunohistochemical analysis of paraffin-embedded Human lung. 1, Antibody was diluted at 1:200(4°,overnight). 2, High-pressure and temperature EDTA, pH8.0 was used for antigen retrieval. 3,Secondary antibody was diluted at 1:200(room temperature, 30min).



Immunohistochemical analysis of paraffin-embedded Human lung. 1, Antibody was diluted at 1:200(4°,overnight). 2, High-pressure and temperature EDTA, pH8.0 was used for antigen retrieval. 3,Secondary antibody was diluted at 1:200(room temperature, 30min).

Please note: All products are 'FOR RESEARCH USE ONLY. NOT FOR USE IN DIAGNOSTIC OR THERAPEUTIC PROCEDURES'.