

CPA4 Antibody (C-term)

Purified Rabbit Polyclonal Antibody (Pab)

Catalog # AP7338b

Product Information

Application	WB, E
Primary Accession	Q9UI42
Reactivity	Human
Host	Rabbit
Clonality	Polyclonal
Isotype	Rabbit IgG
Clone Names	RB19009
Calculated MW	47351
Antigen Region	305-336

Additional Information

Gene ID	51200
Other Names	Carboxypeptidase A4, 3417-, Carboxypeptidase A3, CPA4, CPA3
Target/Specificity	This CPA4 antibody is generated from rabbits immunized with a KLH conjugated synthetic peptide between 305-336 amino acids from the C-terminal region of human CPA4.
Dilution	WB~~1:1000 E~~Use at an assay dependent concentration.
Format	Purified polyclonal antibody supplied in PBS with 0.09% (W/V) sodium azide. This antibody is prepared by Saturated Ammonium Sulfate (SAS) precipitation followed by dialysis against PBS.
Storage	Maintain refrigerated at 2-8°C for up to 2 weeks. For long term storage store at -20°C in small aliquots to prevent freeze-thaw cycles.
Precautions	CPA4 Antibody (C-term) is for research use only and not for use in diagnostic or therapeutic procedures.

Protein Information

Name	CPA4
Synonyms	CPA3
Function	Metalloprotease that cleaves hydrophobic C-terminal residues with a preference for -Phe, -Leu, -Ile, -Met, -Tyr and -Val (PubMed: 20385563). May function in peptide hormone and/or neuropeptide catabolism

(PubMed:[20385563](#)).

Cellular Location

Secreted.

Tissue Location

Fetal expression in the adrenal gland, brain, heart, intestine, kidney, liver and lung. Except for fetal brain that shows no imprinting, expression was found preferentially from the maternal allele

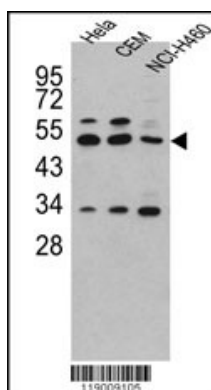
Background

CPA4 is a member of the carboxypeptidase A/B subfamily. Carboxypeptidases are zinc-containing exopeptidases that catalyze the release of carboxy-terminal amino acids, and are synthesized as zymogens that are activated by proteolytic cleavage. This protein could be involved in the histone hyperacetylation pathway. It is imprinted and may be a strong candidate protein for prostate cancer aggressiveness.

References

- Ross,P.L., Cheng,I. BMC Cancer 9, 69 (2009)
Bentley,L., Nakabayashi,K. J. Med. Genet. 40 (4), 249-256 (2003)
Kayashima,T., Yamasaki,K. Hum. Genet. 112 (3), 220-226 (2003)
Hayashida,S., Yamasaki,K. Genomics 66 (2), 221-225 (2000)

Images



Western blot analysis of CPA4 antibody (C-term) (Cat.#AP7338b) in HeLa, CEM and NCI-H460 cell line lysates (35ug/lane). CPA4 (arrow) was detected using the purified Pab.

Please note: All products are 'FOR RESEARCH USE ONLY. NOT FOR USE IN DIAGNOSTIC OR THERAPEUTIC PROCEDURES'.