

BLC Polyclonal Antibody

Catalog # AP73391

Product Information

Application	WB, IHC-P
Primary Accession	O43927
Reactivity	Human
Host	Rabbit
Clonality	Polyclonal
Calculated MW	12664

Additional Information

Gene ID	10563
Other Names	CXCL13; BCA1; BLC; SCYB13; C-X-C motif chemokine 13; Angie; B cell-attracting chemokine 1; BCA-1; B lymphocyte chemoattractant; CXC chemokine BLC; Small-inducible cytokine B13
Dilution	WB~~Western Blot: 1/500 - 1/2000. IHC-p: 1:100-300 ELISA: 1/20000. Not yet tested in other applications. IHC-P~~Western Blot: 1/500 - 1/2000. IHC-p: 1:100-300 ELISA: 1/20000. Not yet tested in other applications.
Format	Liquid in PBS containing 50% glycerol, 0.5% BSA and 0.09% (W/V) sodium azide.
Storage Conditions	-20°C

Protein Information

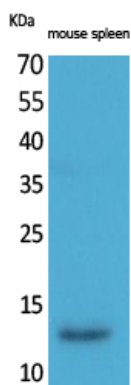
Name	CXCL13
Synonyms	BCA1, BLC, SCYB13
Function	Chemotactic for B-lymphocytes but not for T-lymphocytes, monocytes and neutrophils. Does not induce calcium release in B- lymphocytes. Binds to BLR1/CXCR5.
Cellular Location	Secreted.
Tissue Location	Highest levels in liver, followed by spleen, lymph node, appendix and stomach. Low levels in salivary gland, mammary gland and fetal spleen

Background

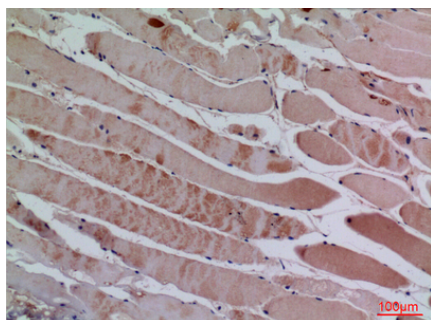
Chemotactic for B-lymphocytes but not for T-lymphocytes, monocytes and neutrophils. Does not induce

calcium release in B- lymphocytes. Binds to BLR1/CXCR5.

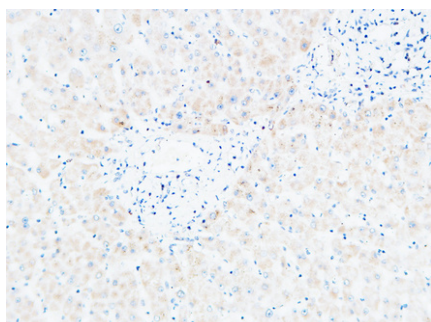
Images



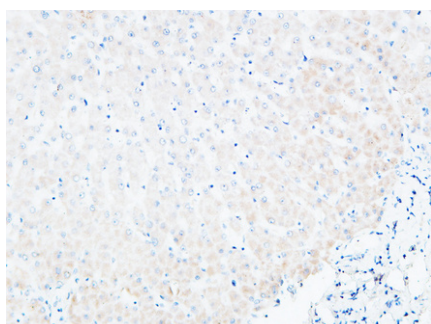
Western Blot analysis of mouse spleen cells using BLC Polyclonal Antibody.. Secondary antibody was diluted at 1:20000



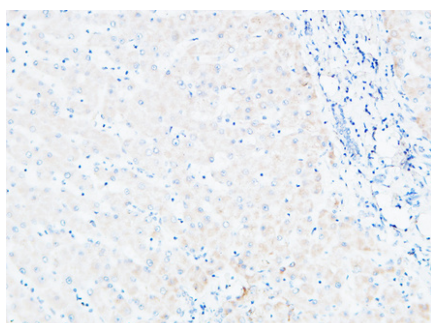
Immunohistochemical analysis of paraffin-embedded human-muscle, antibody was diluted at 1:100



Immunohistochemical analysis of paraffin-embedded Human Liver. 1, Antibody was diluted at 1:200(4°,overnight). 2, High-pressure and temperature EDTA, pH8.0 was used for antigen retrieval. 3,Secondary antibody was diluted at 1:200(room temperature, 30min).



Immunohistochemical analysis of paraffin-embedded Human Liver. 1, Antibody was diluted at 1:200(4°,overnight). 2, High-pressure and temperature EDTA, pH8.0 was used for antigen retrieval. 3,Secondary antibody was diluted at 1:200(room temperature, 30min).



Immunohistochemical analysis of paraffin-embedded Human Liver. 1, Antibody was diluted at 1:200(4°,overnight). 2, High-pressure and temperature EDTA, pH8.0 was used for antigen retrieval. 3,Secondary antibody was diluted at 1:200(room temperature, 30min).

Please note: All products are 'FOR RESEARCH USE ONLY. NOT FOR USE IN DIAGNOSTIC OR THERAPEUTIC PROCEDURES'.