

P2X3 Polyclonal Antibody

Catalog # AP73394

Product Information

Application	WB, IHC-P
Primary Accession	P56373
Reactivity	Human, Mouse, Rat
Host	Rabbit
Clonality	Polyclonal
Calculated MW	44289

Additional Information

Gene ID	5024
Other Names	P2RX3; P2X purinoceptor 3; P2X3; ATP receptor; Purinergic receptor
Dilution	WB~~Western Blot: 1/500 - 1/2000. IHC-p: 1:100-300 ELISA: 1/20000. Not yet tested in other applications. IHC-P~~N/A
Format	Liquid in PBS containing 50% glycerol, 0.5% BSA and 0.09% (W/V) sodium azide.
Storage Conditions	-20°C

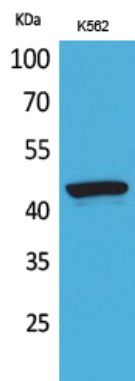
Protein Information

Name	P2RX3
Function	Extracellular ATP-activated non-selective cation channel (PubMed: 10440098 , PubMed: 27626375 , PubMed: 29674445 , PubMed: 31232692). Plays particularly important role in sensory neurons where its activation is critical for gustatory, nociceptive responses, visceral reflexes and sensory hypersensitization (By similarity).
Cellular Location	Cell membrane; Multi-pass membrane protein Note=Localizes to neuronal cell body of sensory neurons {ECO:0000250 UniProtKB:P49654}

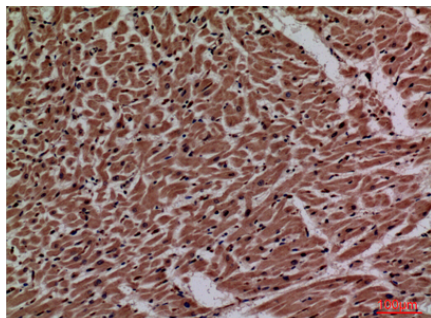
Background

Receptor for ATP that acts as a ligand-gated cation channel (PubMed: [27626375](#)). Plays a role in sensory perception. Required for normal perception of pain. Required for normal taste perception (By similarity).

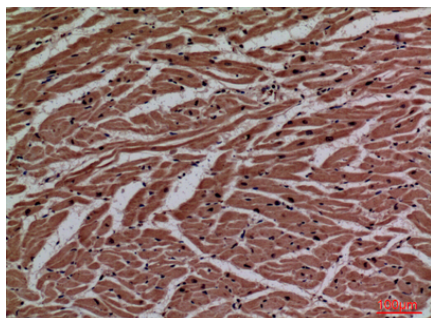
Images



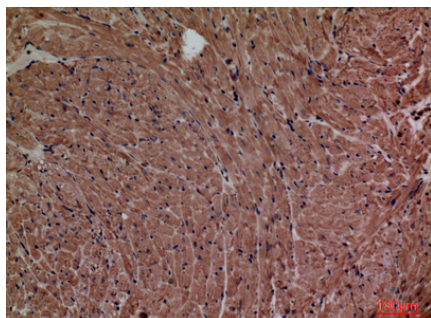
Western Blot analysis of K562 cells using P2X3 Polyclonal Antibody.. Secondary antibody was diluted at 1:20000



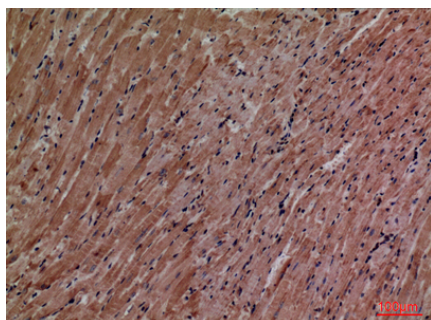
Immunohistochemical analysis of paraffin-embedded human-heart, antibody was diluted at 1:100



Immunohistochemical analysis of paraffin-embedded human-heart, antibody was diluted at 1:100



Immunohistochemical analysis of paraffin-embedded mouse-heart, antibody was diluted at 1:100



Immunohistochemical analysis of paraffin-embedded mouse-heart, antibody was diluted at 1:100

Please note: All products are 'FOR RESEARCH USE ONLY. NOT FOR USE IN DIAGNOSTIC OR THERAPEUTIC PROCEDURES'.