

Kallistatin Polyclonal Antibody

Catalog # AP73399

Product Information

Application	WB, IHC-P
Primary Accession	P29622
Reactivity	Human
Host	Rabbit
Clonality	Polyclonal
Calculated MW	48542

Additional Information

Gene ID	5267
Other Names	SERPINA4; KST; PI4; Kallistatin; Kallikrein inhibitor; Peptidase inhibitor 4; PI-4; Serpin A4
Dilution	WB~~Western Blot: 1/500 - 1/2000. IHC-p: 1:100-300 ELISA: 1/20000. Not yet tested in other applications. IHC-P~~N/A
Format	Liquid in PBS containing 50% glycerol, 0.5% BSA and 0.09% (W/V) sodium azide.
Storage Conditions	-20°C

Protein Information

Name	SERPINA4
Synonyms	KST, PI4
Function	Inhibits human amidolytic and kininogenase activities of tissue kallikrein. Inhibition is achieved by formation of an equimolar, heat- and SDS-stable complex between the inhibitor and the enzyme, and generation of a small C-terminal fragment of the inhibitor due to cleavage at the reactive site by tissue kallikrein.
Cellular Location	Secreted.
Tissue Location	Expressed by the liver and secreted in plasma.

Background

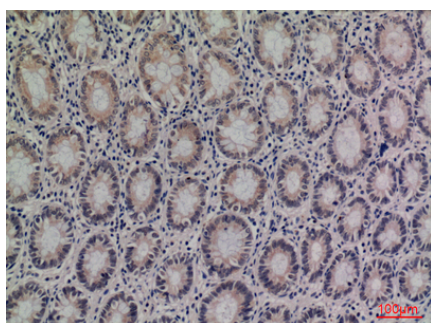
Inhibits human amidolytic and kininogenase activities of tissue kallikrein. Inhibition is achieved by formation of an equimolar, heat- and SDS-stable complex between the inhibitor and the enzyme, and

generation of a small C-terminal fragment of the inhibitor due to cleavage at the reactive site by tissue kallikrein.

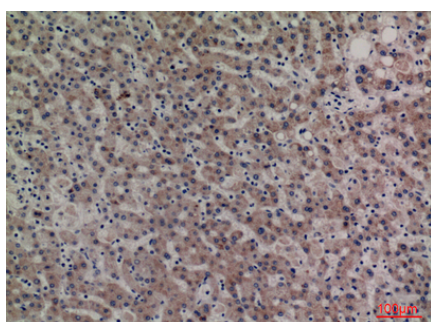
Images



Western Blot analysis of K562 cells using Kallistatin Polyclonal Antibody.. Secondary antibody was diluted at 1:20000



Immunohistochemical analysis of paraffin-embedded human-colon, antibody was diluted at 1:100



Immunohistochemical analysis of paraffin-embedded human-liver, antibody was diluted at 1:100

Please note: All products are 'FOR RESEARCH USE ONLY. NOT FOR USE IN DIAGNOSTIC OR THERAPEUTIC PROCEDURES'.