

Protein C Polyclonal Antibody

Catalog # AP73404

Product Information

Application	WB, IHC-P
Primary Accession	P04070
Reactivity	Human
Host	Rabbit
Clonality	Polyclonal
Calculated MW	52071

Additional Information

Gene ID	5624
Other Names	PROC; Vitamin K-dependent protein C; Anticoagulant protein C; Autoprothrombin IIA; Blood coagulation factor XIV
Dilution	WB~~Western Blot: 1/500 - 1/2000. IHC-p: 1:100-300 ELISA: 1/20000. Not yet tested in other applications. IHC-P~~N/A
Format	Liquid in PBS containing 50% glycerol, 0.5% BSA and 0.09% (W/V) sodium azide.
Storage Conditions	-20°C

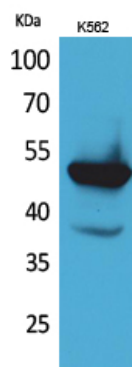
Protein Information

Name	PROC
Function	Protein C is a vitamin K-dependent serine protease that regulates blood coagulation by inactivating factors Va and VIIa in the presence of calcium ions and phospholipids (PubMed: 25618265). Exerts a protective effect on the endothelial cell barrier function (PubMed: 25651845).
Cellular Location	Secreted. Golgi apparatus Endoplasmic reticulum
Tissue Location	Plasma; synthesized in the liver.

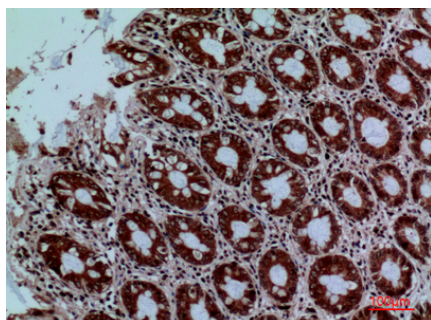
Background

Protein C is a vitamin K-dependent serine protease that regulates blood coagulation by inactivating factors Va and VIIa in the presence of calcium ions and phospholipids (PubMed:[25618265](#)). Exerts a protective effect on the endothelial cell barrier function (PubMed:[25651845](#)).

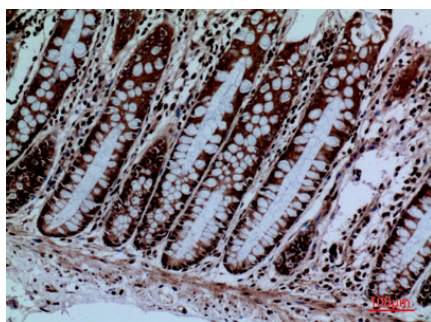
Images



Western Blot analysis of K562 cells using Protein C Polyclonal Antibody.. Secondary antibody was diluted at 1:20000



Immunohistochemical analysis of paraffin-embedded human-colon, antibody was diluted at 1:100



Immunohistochemical analysis of paraffin-embedded human-colon, antibody was diluted at 1:100

Please note: All products are 'FOR RESEARCH USE ONLY. NOT FOR USE IN DIAGNOSTIC OR THERAPEUTIC PROCEDURES'.