

SNAP 23 Polyclonal Antibody

Catalog # AP73414

Product Information

Application	WB, IHC-P, IF, ICC, E
Primary Accession	O00161
Reactivity	Human, Rat, Mouse
Host	Rabbit
Clonality	Polyclonal

Additional Information

Other Names	SNAP23; Synaptosomal-associated protein 23; SNAP-23; Vesicle-membrane fusion protein SNAP-23
Dilution	WB~Western Blot: 1/500 - 1/2000. IHC-p: 1:100-300 ELISA: 1/20000. Not yet tested in other applications. IHC-P~Western Blot: 1/500 - 1/2000. IHC-p: 1:100-300 ELISA: 1/20000. Not yet tested in other applications. IF~1:50~200 ICC~N/A E~N/A
Format	Liquid in PBS containing 50% glycerol, 0.5% BSA and 0.09% (W/V) sodium azide.
Storage Conditions	-20°C

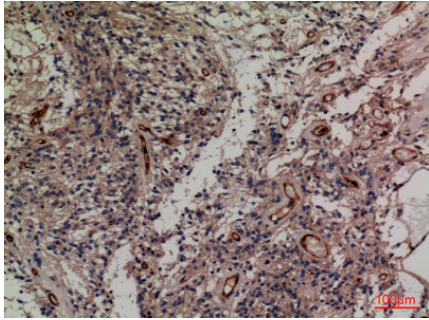
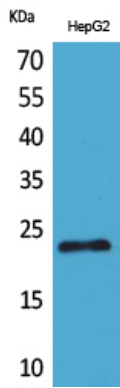
Protein Information

Background

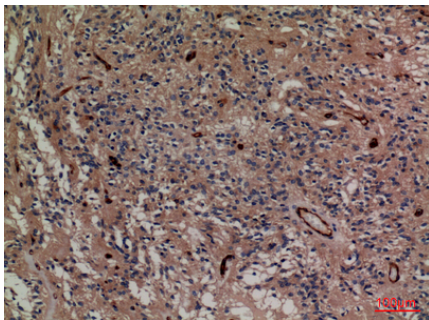
Essential component of the high affinity receptor for the general membrane fusion machinery and an important regulator of transport vesicle docking and fusion.

Images

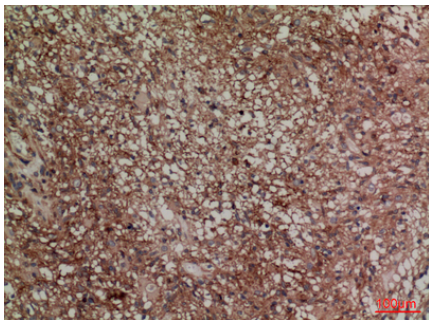
Western Blot analysis of HepG2 cells using SNAP 23 Polyclonal Antibody.. Secondary antibody was diluted at 1:20000



Immunohistochemical analysis of paraffin-embedded human-ovary-cancer, antibody was diluted at 1:100



Immunohistochemical analysis of paraffin-embedded human-ovary-cancer, antibody was diluted at 1:100



Immunohistochemical analysis of paraffin-embedded mouse-brain, antibody was diluted at 1:100

Please note: All products are 'FOR RESEARCH USE ONLY. NOT FOR USE IN DIAGNOSTIC OR THERAPEUTIC PROCEDURES'.