

LASP-1 Polyclonal Antibody

Catalog # AP73417

Product Information

Application	WB, IHC-P
Primary Accession	Q14847
Reactivity	Human, Mouse, Rat
Host	Rabbit
Clonality	Polyclonal
Calculated MW	29717

Additional Information

Gene ID	3927
Other Names	LASP1; MLN50; LIM and SH3 domain protein 1; LASP-1; Metastatic lymph node gene 50 protein; MLN 50
Dilution	WB~~Western Blot: 1/500 - 1/2000. ELISA: 1/20000. Not yet tested in other applications. IHC-P~~N/A
Format	Liquid in PBS containing 50% glycerol, 0.5% BSA and 0.09% (W/V) sodium azide.
Storage Conditions	-20°C

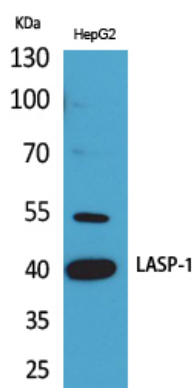
Protein Information

Name	LASP1
Synonyms	MLN50
Function	Plays an important role in the regulation of dynamic actin- based, cytoskeletal activities. Agonist-dependent changes in LASP1 phosphorylation may also serve to regulate actin-associated ion transport activities, not only in the parietal cell but also in certain other F-actin-rich secretory epithelial cell types (By similarity).
Cellular Location	Cytoplasm, cell cortex. Cytoplasm, cytoskeleton. Note=Associated with the F-actin rich cortical cytoskeleton.

Background

Plays an important role in the regulation of dynamic actin-based, cytoskeletal activities. Agonist-dependent changes in LASP1 phosphorylation may also serve to regulate actin-associated ion transport activities, not only in the parietal cell but also in certain other F-actin-rich secretory epithelial cell types (By similarity).

Images



Western Blot analysis of HepG2 cells using LASP-1 Polyclonal Antibody. Antibody was diluted at 1:500. Secondary antibody was diluted at 1:20000

Please note: All products are 'FOR RESEARCH USE ONLY. NOT FOR USE IN DIAGNOSTIC OR THERAPEUTIC PROCEDURES'.