

CD1D Polyclonal Antibody

Catalog # AP73422

Product Information

Application	WB, IHC-P
Primary Accession	P15813
Reactivity	Human
Host	Rabbit
Clonality	Polyclonal
Calculated MW	37717

Additional Information

Gene ID	912
Other Names	CD1D; Antigen-presenting glycoprotein CD1d; R3G1; CD1d
Dilution	WB~~Western Blot: 1/500 - 1/2000. IHC-p: 1:100-300 ELISA: 1/20000. Not yet tested in other applications. IHC-P~~Western Blot: 1/500 - 1/2000. IHC-p: 1:100-300 ELISA: 1/20000. Not yet tested in other applications.
Format	Liquid in PBS containing 50% glycerol, 0.5% BSA and 0.09% (W/V) sodium azide.
Storage Conditions	-20°C

Protein Information

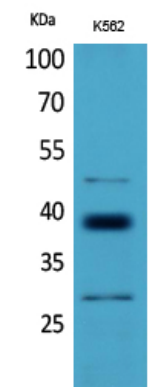
Name	CD1D
Function	Antigen-presenting protein that binds self and non-self glycolipids and presents them to T-cell receptors on natural killer T- cells.
Cellular Location	Cell membrane; Single-pass type I membrane protein. Basolateral cell membrane; Single-pass type I membrane protein. Endosome membrane; Single-pass type I membrane protein. Lysosome membrane; Single-pass type I membrane protein. Endoplasmic reticulum membrane; Single-pass type I membrane protein. Note=Subject to intracellular trafficking between the cell membrane, endosomes and lysosomes.
Tissue Location	Expressed on cortical thymocytes, on certain T-cell leukemias, and in various other tissues

Background

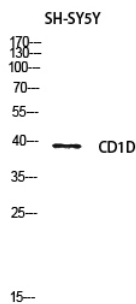
Antigen-presenting protein that binds self and non-self glycolipids and presents them to T-cell receptors on

natural killer T-cells.

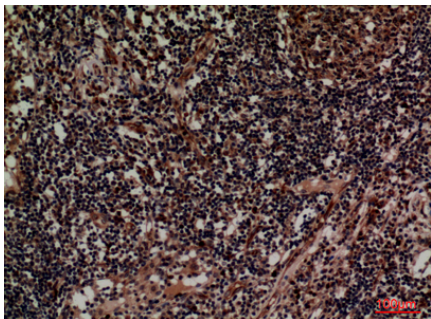
Images



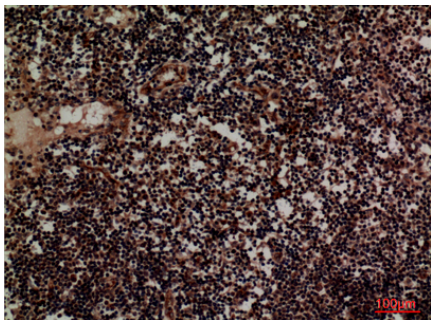
Western Blot analysis of K562 cells using CD1D Polyclonal Antibody. Antibody was diluted at 1:500. Secondary antibody was diluted at 1:20000



Western blot analysis of SH-SY5Y lysis using CD1D antibody. Antibody was diluted at 1:500. Secondary antibody was diluted at 1:20000

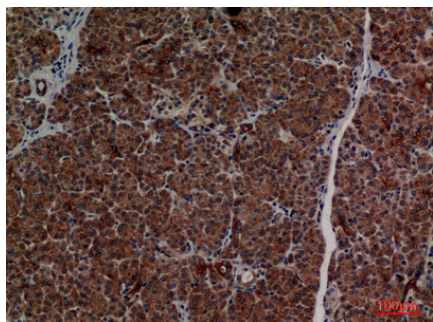
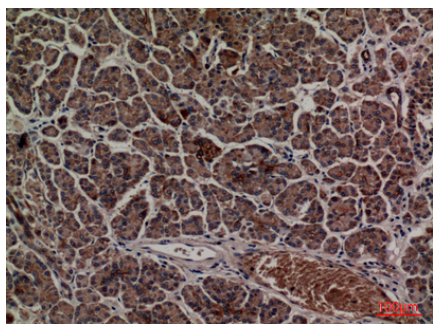


Immunohistochemical analysis of paraffin-embedded human-lymph, antibody was diluted at 1:100



Immunohistochemical analysis of paraffin-embedded human-lymph, antibody was diluted at 1:100

Immunohistochemical analysis of paraffin-embedded human-pancreas, antibody was diluted at 1:100



Immunohistochemical analysis of paraffin-embedded human-pancreas, antibody was diluted at 1:100

Please note: All products are 'FOR RESEARCH USE ONLY. NOT FOR USE IN DIAGNOSTIC OR THERAPEUTIC PROCEDURES'.