

# KLF5 Antibody (C-term)

Purified Rabbit Polyclonal Antibody (Pab)

Catalog # AP7342b

## Product Information

---

<b>Application</b>	IHC-P, FC, IF, WB, E
<b>Primary Accession</b>	<a href="#">Q13887</a>
<b>Other Accession</b>	<a href="#">Q9Z0Z7</a>
<b>Reactivity</b>	Human, Mouse
<b>Host</b>	Rabbit
<b>Clonality</b>	Polyclonal
<b>Isotype</b>	Rabbit IgG
<b>Calculated MW</b>	50792
<b>Antigen Region</b>	341-370

## Additional Information

---

<b>Gene ID</b>	688
<b>Other Names</b>	Krueppel-like factor 5, Basic transcription element-binding protein 2, BTE-binding protein 2, Colon krueppel-like factor, GC-box-binding protein 2, Intestinal-enriched krueppel-like factor, Transcription factor BTEB2, KLF5, BTEB2, CKLF, IKLF
<b>Target/Specificity</b>	This KLF5 antibody is generated from rabbits immunized with a KLH conjugated synthetic peptide between 341-370 amino acids from the C-terminal region of human KLF5.
<b>Dilution</b>	IHC-P~~1:100~500 FC~~1:10~50 IF~~1:10~50 WB~~1:1000 E~~Use at an assay dependent concentration.
<b>Format</b>	Purified polyclonal antibody supplied in PBS with 0.09% (W/V) sodium azide. This antibody is prepared by Saturated Ammonium Sulfate (SAS) precipitation followed by dialysis against PBS.
<b>Storage</b>	Maintain refrigerated at 2-8°C for up to 2 weeks. For long term storage store at -20°C in small aliquots to prevent freeze-thaw cycles.
<b>Precautions</b>	KLF5 Antibody (C-term) is for research use only and not for use in diagnostic or therapeutic procedures.

## Protein Information

---

<b>Name</b>	KLF5
<b>Synonyms</b>	BTEB2, CKLF, IKLF

<b>Function</b>	Transcription factor that binds to GC box promoter elements. Activates the transcription of these genes.
<b>Cellular Location</b>	Nucleus.
<b>Tissue Location</b>	Expressed only in testis and placenta.

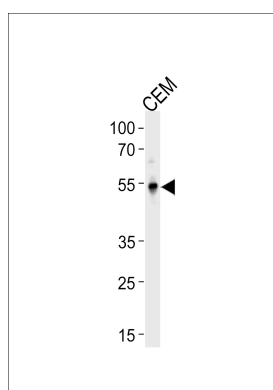
## Background

KLF5 is a member of the Kruppel-like factor subfamily of zinc finger proteins. Since the protein localizes to the nucleus and binds the epidermal growth factor response element, the protein is thought to be a transcription factor.

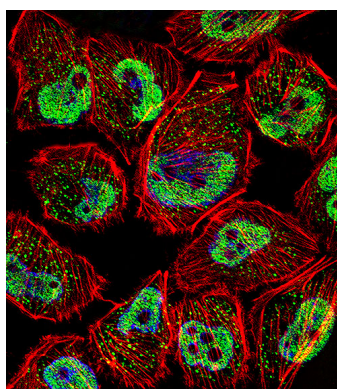
## References

Guo,P., Dong,X.Y. J. Biol. Chem. 284 (10), 6071-6078 (2009)  
Lee,M.Y., Moon,J.S. Biochem. J. 417 (1), 313-322 (2009)  
Du,J.X., Bialkowska,A.B. J. Biol. Chem. 283 (46), 31991-32002 (2008)  
Miyamoto,S., Suzuki,T. Mol. Cell. Biol. 23 (23), 8528-8541 (2003)  
Shi,H., Zhang,Z. Nucleic Acids Res. 27 (24), 4807-4815 (1999)

## Images

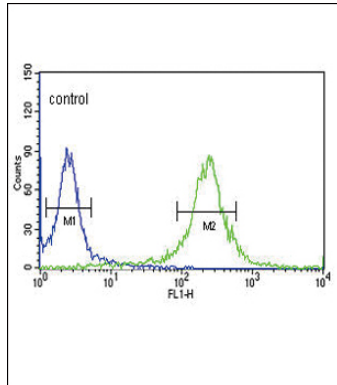
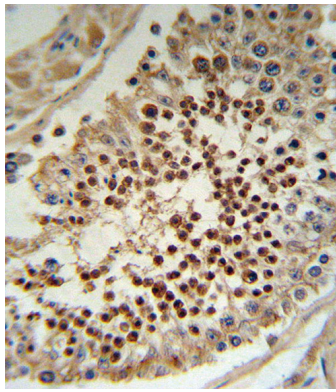


KLF5 Antibody (C-term) (Cat. #AP7342b) western blot analysis in CEM cell line lysates (35ug/lane). This demonstrates the KLF5 antibody detected the KLF5 protein (arrow).



Fluorescent confocal image of U251 cell stained with KLF5 Antibody (C-term)(Cat#AP7342b). U251 cells were fixed with 4% PFA (20 min), permeabilized with Triton X-100 (0.1%, 10 min), then incubated with KLF5 primary antibody (1:25, 1 h at 37°C). For secondary antibody, Alexa Fluor® 488 conjugated donkey anti-rabbit antibody (green) was used (1:400, 50 min at 37°C). Cytoplasmic actin was counterstained with Alexa Fluor® 555 (red) conjugated Phalloidin (7units/ml, 1 h at 37°C). Nuclei were counterstained with DAPI (blue) (10 µg/ml, 10 min). KLF5 immunoreactivity is localized to vesicles and Nucleus significantly.

KLF5 Antibody (C-term) (Cat.#AP7342b) IHC analysis in formalin fixed and paraffin embedded human testis tissue followed by peroxidase conjugation of the secondary antibody and DAB staining. This data demonstrates the use of the KLF5 Antibody (C-term) for immunohistochemistry. Clinical relevance has not been evaluated.



KLF5 Antibody (C-term) (Cat. #AP7342b) flow cytometric analysis of HeLa cells (right histogram) compared to a negative control cell (left histogram). FITC-conjugated goat-anti-rabbit secondary antibodies were used for the analysis.

## Citations

- [Ezh2-mediated repression of a transcriptional pathway upstream of Mmp9 maintains integrity of the developing vasculature.](#)

Please note: All products are 'FOR RESEARCH USE ONLY. NOT FOR USE IN DIAGNOSTIC OR THERAPEUTIC PROCEDURES'.