

CD50 Polyclonal Antibody

Catalog # AP73432

Product Information

Application	WB, IHC-P
Primary Accession	P32942
Reactivity	Human
Host	Rabbit
Clonality	Polyclonal
Calculated MW	59541

Additional Information

Gene ID	3385
Other Names	ICAM3; Intercellular adhesion molecule 3; ICAM-3; CDw50; ICAM-R; CD50
Dilution	WB~~Western Blot: 1/500 - 1/2000. IHC-p: 1:100-300 ELISA: 1/20000. Not yet tested in other applications. IHC-P~~Western Blot: 1/500 - 1/2000. IHC-p: 1:100-300 ELISA: 1/20000. Not yet tested in other applications.
Format	Liquid in PBS containing 50% glycerol, 0.5% BSA and 0.09% (W/V) sodium azide.
Storage Conditions	-20°C

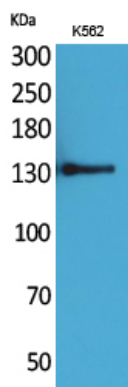
Protein Information

Name	ICAM3
Function	ICAM proteins are ligands for the leukocyte adhesion protein LFA-1 (integrin alpha-L/beta-2) (PubMed: 1448173). ICAM3 is also a ligand for integrin alpha-D/beta-2. In association with integrin alpha- L/beta-2, contributes to apoptotic neutrophil phagocytosis by macrophages (PubMed: 23775590).
Cellular Location	Membrane; Single-pass type I membrane protein.
Tissue Location	Leukocytes.

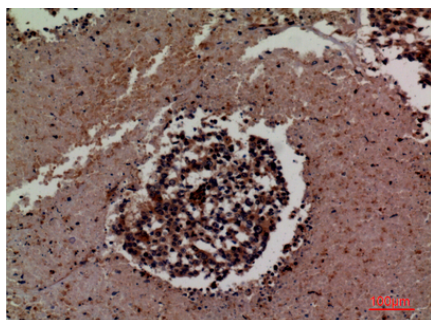
Background

ICAM proteins are ligands for the leukocyte adhesion protein LFA-1 (integrin alpha-L/beta-2) (PubMed:[1448173](#)). ICAM3 is also a ligand for integrin alpha-D/beta-2. In association with integrin alpha-L/beta-2, contributes to apoptotic neutrophil phagocytosis by macrophages (PubMed:[23775590](#)).

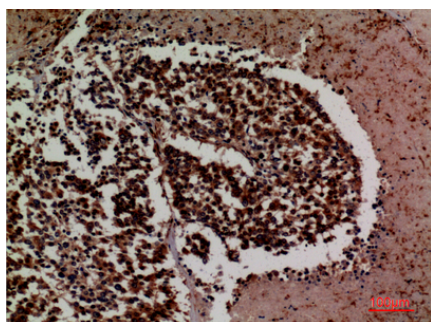
Images



Western Blot analysis of K562 cells using CD50 Polyclonal Antibody.. Secondary antibody was diluted at 1:20000



Immunohistochemical analysis of paraffin-embedded human-lung-cancer, antibody was diluted at 1:100



Immunohistochemical analysis of paraffin-embedded human-lung-cancer, antibody was diluted at 1:100

Please note: All products are 'FOR RESEARCH USE ONLY. NOT FOR USE IN DIAGNOSTIC OR THERAPEUTIC PROCEDURES'.