

# CD107a Polyclonal Antibody

Catalog # AP73443

## Product Information

Application	WB
Primary Accession	<a href="#">P11279</a>
Reactivity	Human, Rat
Host	Rabbit
Clonality	Polyclonal
Calculated MW	44882

## Additional Information

Gene ID	3916
Other Names	LAMP1; Lysosome-associated membrane glycoprotein 1; LAMP-1; Lysosome-associated membrane protein 1; CD107 antigen-like family member A; CD107a
Dilution	WB~~Western Blot: 1/500 - 1/2000. ELISA: 1/20000. Not yet tested in other applications.
Format	Liquid in PBS containing 50% glycerol, 0.5% BSA and 0.09% (W/V) sodium azide.
Storage Conditions	-20°C

## Protein Information

Name	LAMP1 {ECO:0000303   PubMed:23632890, ECO:0000312   HGNC:HGNC:6499}
Function	Lysosomal membrane glycoprotein which plays an important role in lysosome biogenesis, lysosomal pH regulation, autophagy and cholesterol homeostasis (PubMed: <a href="#">37390818</a> ). Acts as an important regulator of lysosomal lumen pH regulation by acting as a direct inhibitor of the proton channel TMEM175, facilitating lysosomal acidification for optimal hydrolase activity (PubMed: <a href="#">37390818</a> ). Also plays an important role in NK-cells cytotoxicity (PubMed: <a href="#">2022921</a> , PubMed: <a href="#">23632890</a> ). Mechanistically, participates in cytotoxic granule movement to the cell surface and perforin trafficking to the lytic granule (PubMed: <a href="#">23632890</a> ). In addition, protects NK-cells from degranulation-associated damage induced by their own cytotoxic granule content (PubMed: <a href="#">23847195</a> ). Presents carbohydrate ligands to selectins (PubMed: <a href="#">7685349</a> ).
Cellular Location	Lysosome membrane; Single-pass type I membrane protein. Endosome membrane; Single- pass type I membrane protein. Late endosome membrane; Single-pass type I membrane protein. Cell membrane; Single-pass

type I membrane protein. Cytolytic granule membrane; Single-pass type I membrane protein. Note=This protein shuttles between lysosomes, endosomes, and the plasma membrane (By similarity). Colocalizes with OSBPL1A at the late endosome (PubMed:16176980). {ECO:0000250|UniProtKB:P05300, ECO:0000269|PubMed:16176980, ECO:0000269|PubMed:17897319}

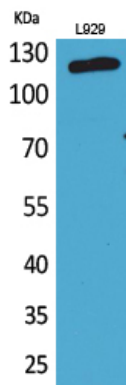
## Background

---

Presents carbohydrate ligands to selectins. Also implicated in tumor cell metastasis.

## Images

---



Western Blot analysis of L929 cells using CD107a Polyclonal Antibody.. Secondary antibody was diluted at 1:20000

Please note: All products are 'FOR RESEARCH USE ONLY. NOT FOR USE IN DIAGNOSTIC OR THERAPEUTIC PROCEDURES'.