

# CD116 Polyclonal Antibody

Catalog # AP73445

## Product Information

---

<b>Application</b>	WB, IHC-P
<b>Primary Accession</b>	<a href="#">P15509</a>
<b>Reactivity</b>	Human
<b>Host</b>	Rabbit
<b>Clonality</b>	Polyclonal
<b>Calculated MW</b>	46207

## Additional Information

---

<b>Gene ID</b>	1438
<b>Other Names</b>	CSF2RA; CSF2R; CSF2RY; Granulocyte-macrophage colony-stimulating factor receptor subunit alpha; GM-CSF-R-alpha; GMCSFR-alpha; GMR-alpha; CDw116; CD116
<b>Dilution</b>	WB~~Western Blot: 1/500 - 1/2000. IHC-p: 1:100-300 ELISA: 1/20000. Not yet tested in other applications. IHC-P~~Western Blot: 1/500 - 1/2000. IHC-p: 1:100-300 ELISA: 1/20000. Not yet tested in other applications.
<b>Format</b>	Liquid in PBS containing 50% glycerol, 0.5% BSA and 0.09% (W/V) sodium azide.
<b>Storage Conditions</b>	-20°C

## Protein Information

---

<b>Name</b>	CSF2RA
<b>Synonyms</b>	CSF2R, CSF2RY
<b>Function</b>	Low affinity receptor for granulocyte-macrophage colony- stimulating factor. Transduces a signal that results in the proliferation, differentiation, and functional activation of hematopoietic cells.
<b>Cellular Location</b>	Cell membrane; Single-pass type I membrane protein [Isoform 4]; Secreted.

## Background

---

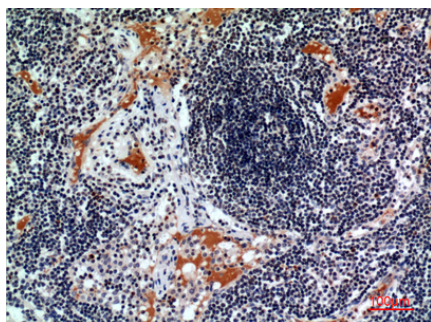
Low affinity receptor for granulocyte-macrophage colony- stimulating factor. Transduces a signal that results in the proliferation, differentiation, and functional activation of hematopoietic cells.

## Images

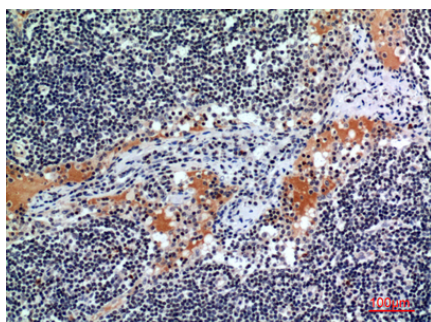
---



Western Blot analysis of L929 cells using CD116 Polyclonal Antibody.. Secondary antibody was diluted at 1:20000



Immunohistochemical analysis of paraffin-embedded human-lymph, antibody was diluted at 1:100



Immunohistochemical analysis of paraffin-embedded human-lymph, antibody was diluted at 1:100

Please note: All products are 'FOR RESEARCH USE ONLY. NOT FOR USE IN DIAGNOSTIC OR THERAPEUTIC PROCEDURES'.