

S100A6 Antibody (C-term)

Purified Rabbit Polyclonal Antibody (Pab)

Catalog # AP7346b

Product Information

Application	WB, FC, E
Primary Accession	P06703
Reactivity	Human, Mouse
Host	Rabbit
Clonality	Polyclonal
Isotype	Rabbit IgG
Clone Names	RB19141
Calculated MW	10180
Antigen Region	37-67

Additional Information

Gene ID	6277
Other Names	Protein S100-A6, Calcyclin, Growth factor-inducible protein 2A9, MLN 4, Prolactin receptor-associated protein, PRA, S100 calcium-binding protein A6, S100A6, CACY
Target/Specificity	This S100A6 antibody is generated from rabbits immunized with a KLH conjugated synthetic peptide between 37-67 amino acids from the C-terminal region of human S100A6.
Dilution	WB~~1:1000 FC~~1:10~50 E~~Use at an assay dependent concentration.
Format	Purified polyclonal antibody supplied in PBS with 0.09% (W/V) sodium azide. This antibody is prepared by Saturated Ammonium Sulfate (SAS) precipitation followed by dialysis against PBS.
Storage	Maintain refrigerated at 2-8°C for up to 2 weeks. For long term storage store at -20°C in small aliquots to prevent freeze-thaw cycles.
Precautions	S100A6 Antibody (C-term) is for research use only and not for use in diagnostic or therapeutic procedures.

Protein Information

Name	S100A6
Synonyms	CACY
Function	May function as calcium sensor and modulator, contributing to cellular

calcium signaling. May function by interacting with other proteins, such as TPR-containing proteins, and indirectly play a role in many physiological processes such as the reorganization of the actin cytoskeleton and in cell motility. Binds 2 calcium ions. Calcium binding is cooperative.

Cellular Location

Nucleus envelope. Cytoplasm. Cell membrane; Peripheral membrane protein; Cytoplasmic side

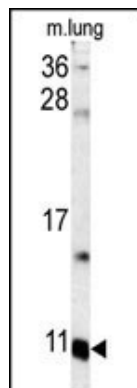
Background

S100A6 is a member of the S100 family of proteins containing 2 EF-hand calcium-binding motifs. S100 proteins are localized in the cytoplasm and/or nucleus of a wide range of cells, and involved in the regulation of a number of cellular processes such as cell cycle progression and differentiation. This protein may function in stimulation of Ca^{2+} -dependent insulin release, stimulation of prolactin secretion, and exocytosis.

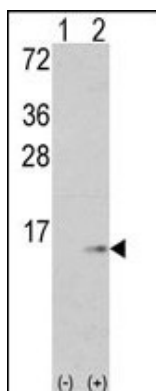
References

van Dieck, J. J. Biol. Chem. 284 (20), 13804-13811 (2009)
Tsoporis, J. N., Izhar, S. J. Biol. Chem. 283 (44), 30174-30183 (2008)
Lee, Y. T., Dimitrova, Y. N. Biochemistry 47 (41), 10921-10932 (2008)
Melle, C., Ernst, G. PLoS ONE 3 (12), E3767 (2008)

Images

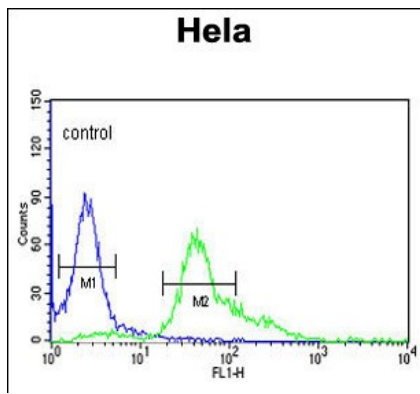


Western blot analysis of S100A6 antibody (C-term) (Cat.#AP7346b) in mouse lung tissue lysates (35ug/lane). S100A6 (arrow) was detected using the purified Pab.



Western blot analysis of S100A6 (arrow) using rabbit polyclonal S100A6 Antibody (C-term) (Cat. #AP7346b). 293 cell lysates (2 ug/lane) either nontransfected (Lane 1) or transiently transfected with the S100A6 gene (Lane 2) (Origene Technologies).

S100A6 Antibody (C-term) (Cat. #AP7346b) flow cytometric analysis of Hela cells (right histogram) compared to a negative control cell (left histogram). FITC-conjugated goat-anti-rabbit secondary antibodies were used for the analysis.



Please note: All products are 'FOR RESEARCH USE ONLY. NOT FOR USE IN DIAGNOSTIC OR THERAPEUTIC PROCEDURES'.