

BMP-3A Polyclonal Antibody

Catalog # AP73486

Product Information

Application	WB, IHC-P
Primary Accession	P12645
Reactivity	Human, Mouse, Rat
Host	Rabbit
Clonality	Polyclonal
Calculated MW	53372

Additional Information

Gene ID	651
Other Names	BMP3; BMP3A; Bone morphogenetic protein 3; BMP-3; Bone morphogenetic protein 3A; BMP-3A; Osteogenin
Dilution	WB~~Western Blot: 1/500 - 1/2000. IHC-p: 1/100-1/300. ELISA: 1/20000. Not yet tested in other applications. IHC-P~~N/A
Format	Liquid in PBS containing 50% glycerol, 0.5% BSA and 0.09% (W/V) sodium azide.
Storage Conditions	-20°C

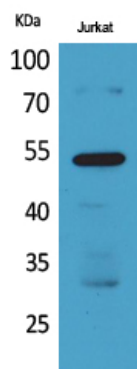
Protein Information

Name	BMP3
Synonyms	BMP3A
Function	Growth factor of the TGF-beta superfamily that plays an essential role in developmental process by inducing and patterning early skeletal formation and by negatively regulating bone density. Antagonizes the ability of certain osteogenic BMPs to induce osteoprogenitor differentiation and ossification (PubMed: 11138004 , PubMed: 15269709). Initiates signaling cascades by associating with type II receptor ACVR2B to activate SMAD2-dependent and SMAD-independent signaling cascades including TAK1 and JNK pathways (PubMed: 31665064).
Cellular Location	Secreted.
Tissue Location	Expressed in adult and fetal cartilage.

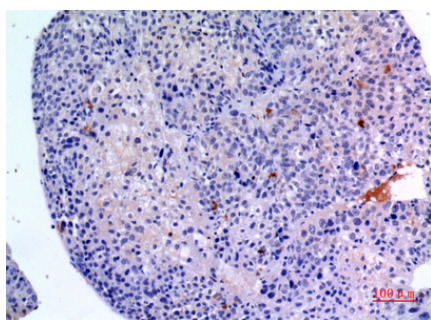
Background

Negatively regulates bone density. Antagonizes the ability of certain osteogenic BMPs to induce osteoprogenitor differentiation and ossification.

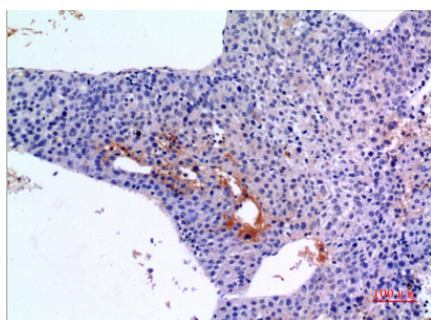
Images



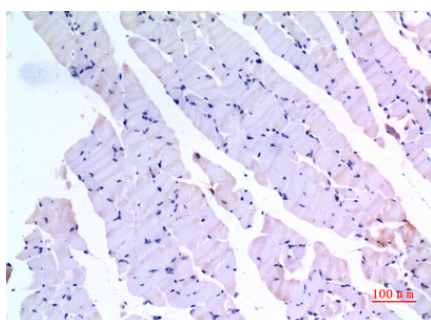
Western Blot analysis of Jurkat cells using BMP-3A Polyclonal Antibody. Antibody was diluted at 1:500. Secondary antibody was diluted at 1:20000



Immunohistochemical analysis of paraffin-embedded human liver cancer, antibody was diluted at 1:100



Immunohistochemical analysis of paraffin-embedded human liver cancer, antibody was diluted at 1:100



Immunohistochemical analysis of paraffin-embedded mouse muscle, antibody was diluted at 1:100

Please note: All products are 'FOR RESEARCH USE ONLY. NOT FOR USE IN DIAGNOSTIC OR THERAPEUTIC PROCEDURES'.