

BMP-8A Polyclonal Antibody

Catalog # AP73489

Product Information

Application	WB, IHC-P
Primary Accession	Q7Z5Y6
Reactivity	Human, Mouse, Rat
Host	Rabbit
Clonality	Polyclonal
Calculated MW	44798

Additional Information

Gene ID	353500
Other Names	BMP8A; Bone morphogenetic protein 8A; BMP-8A
Dilution	WB~~Western Blot: 1/500 - 1/2000. IHC-p: 1/100-1/300. ELISA: 1/20000. Not yet tested in other applications. IHC-P~~Western Blot: 1/500 - 1/2000. IHC-p: 1/100-1/300. ELISA: 1/20000. Not yet tested in other applications.
Format	Liquid in PBS containing 50% glycerol, 0.5% BSA and 0.09% (W/V) sodium azide.
Storage Conditions	-20°C

Protein Information

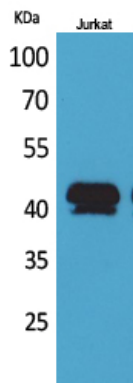
Name	BMP8A
Function	Induces cartilage and bone formation. May be the osteoinductive factor responsible for the phenomenon of epithelial osteogenesis. Plays a role in calcium regulation and bone homeostasis (By similarity). Signaling protein involved in regulation of thermogenesis and energy balance. Proposed to increase the peripheral response of brown adipose tissue (BAT) to adrenergic stimulation while acting centrally in the hypothalamus to increase sympathetic output to BAT.
Cellular Location	Secreted.

Background

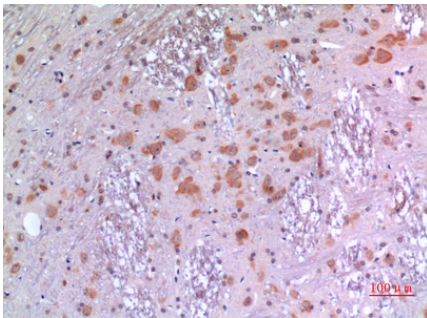
Induces cartilage and bone formation. May be the osteoinductive factor responsible for the phenomenon of epithelial osteogenesis. Plays a role in calcium regulation and bone homeostasis (By similarity). Signaling protein involved in regulation of thermogenesis and energy balance. Proposed to increase the peripheral response of brown adipose tissue (BAT) to adrenergic stimulation while acting centrally in the hypothalamus

to increase sympathetic output to BAT.

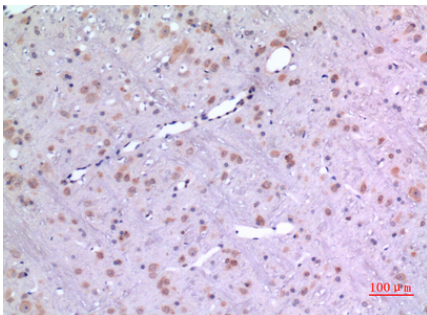
Images



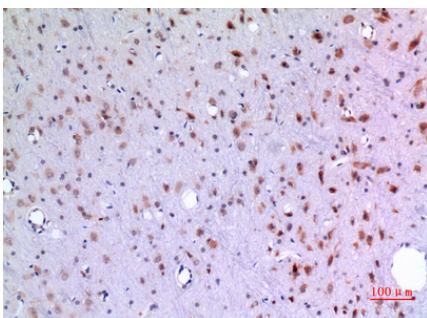
Western Blot analysis of Jurkat cells using BMP-8A Polyclonal Antibody.. Secondary antibody was diluted at 1:20000



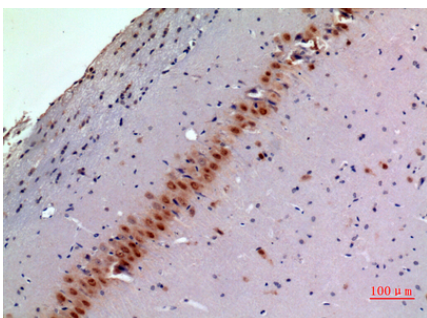
Immunohistochemical analysis of paraffin-embedded rat-brain, antibody was diluted at 1:100



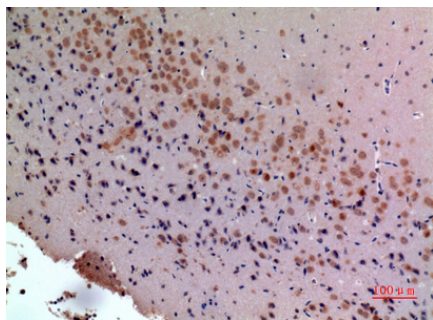
Immunohistochemical analysis of paraffin-embedded rat-brain, antibody was diluted at 1:100



Immunohistochemical analysis of paraffin-embedded rat-brain, antibody was diluted at 1:100



Immunohistochemical analysis of paraffin-embedded mouse-brain, antibody was diluted at 1:100



Immunohistochemical analysis of paraffin-embedded mouse-brain, antibody was diluted at 1:100

Please note: All products are 'FOR RESEARCH USE ONLY. NOT FOR USE IN DIAGNOSTIC OR THERAPEUTIC PROCEDURES'.