

Lymphotactin Polyclonal Antibody

Catalog # AP73490

Product Information

Application	WB, IHC-P
Primary Accession	P47992
Reactivity	Human
Host	Rabbit
Clonality	Polyclonal
Calculated MW	12517

Additional Information

Gene ID	6375
Other Names	XCL1; LTN; SCYC1; Lymphotactin; ATAC; C motif chemokine 1; Cytokine SCM-1; Lymphotaxin; SCM-1-alpha; Small-inducible cytokine C1; XC chemokine ligand 1; XCL2; SCYC2; Cytokine SCM-1 beta; C motif chemokine 2; XC chemokine ligand 2
Dilution	WB~~Western Blot: 1/500 - 1/2000. IHC-p: 1/100-1/300. ELISA: 1/20000. Not yet tested in other applications. IHC-P~~Western Blot: 1/500 - 1/2000. IHC-p: 1/100-1/300. ELISA: 1/20000. Not yet tested in other applications.
Format	Liquid in PBS containing 50% glycerol, 0.5% BSA and 0.09% (W/V) sodium azide.
Storage Conditions	-20°C

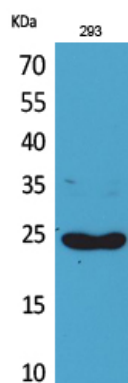
Protein Information

Name	XCL1
Synonyms	LTN, SCYC1
Function	Chemotactic activity for lymphocytes but not for monocytes or neutrophils. In thymus, mediates medullary accumulation of thymic dendritic cells and contributes to regulatoy T cell development, playing a role in self-tolerance establishment.
Cellular Location	Secreted.
Tissue Location	Highest level in spleen, lower in peripheral leukocytes and very low levels in lung, colon and small intestine

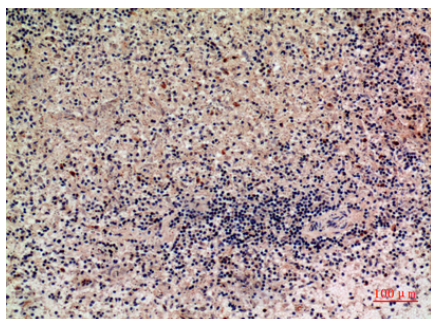
Background

Chemotactic activity for lymphocytes but not for monocytes or neutrophils. In thymus, mediates medullary accumulation of thymic dendritic cells and contributes to regulatory T cell development, playing a role in self-tolerance establishment.

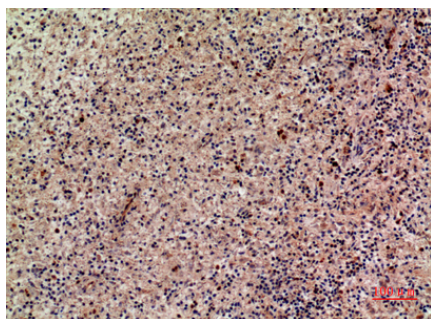
Images



Western Blot analysis of 293 cells using Lymphotactin Polyclonal Antibody.. Secondary antibody was diluted at 1:20000



Immunohistochemical analysis of paraffin-embedded human-liver, antibody was diluted at 1:100



Immunohistochemical analysis of paraffin-embedded human-liver, antibody was diluted at 1:100

Please note: All products are 'FOR RESEARCH USE ONLY. NOT FOR USE IN DIAGNOSTIC OR THERAPEUTIC PROCEDURES'.