

SCCA1/2 Polyclonal Antibody

Catalog # AP73493

Product Information

Application	WB, IHC-P
Primary Accession	P29508
Reactivity	Human
Host	Rabbit
Clonality	Polyclonal
Calculated MW	44565

Additional Information

Gene ID	6317
Other Names	SERPINB3; SCCA; SCCA1; Serpin B3; Protein T4-A; Squamous cell carcinoma antigen 1; SCCA-1
Dilution	WB~~Western Blot: 1/500 - 1/2000. IHC-p: 1/100-1/300. ELISA: 1/20000. Not yet tested in other applications. IHC-P~~Western Blot: 1/500 - 1/2000. IHC-p: 1/100-1/300. ELISA: 1/20000. Not yet tested in other applications.
Format	Liquid in PBS containing 50% glycerol, 0.5% BSA and 0.09% (W/V) sodium azide.
Storage Conditions	-20°C

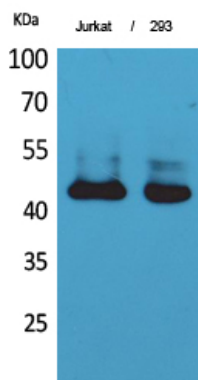
Protein Information

Name	SERPINB3
Synonyms	SCCA, SCCA1
Function	May act as a papain-like cysteine protease inhibitor to modulate the host immune response against tumor cells. Also functions as an inhibitor of UV-induced apoptosis via suppression of the activity of c-Jun NH(2)-terminal kinase (JNK1).
Cellular Location	Cytoplasm. Note=Seems to also be secreted in plasma by cancerous cells but at a low level
Tissue Location	Squamous cells. Expressed in some hepatocellular carcinoma (at protein level).

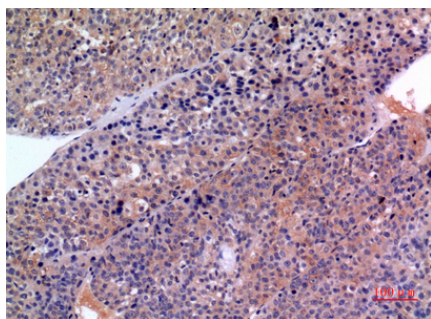
Background

May act as a papain-like cysteine protease inhibitor to modulate the host immune response against tumor cells. Also functions as an inhibitor of UV-induced apoptosis via suppression of the activity of c-Jun NH(2)-terminal kinase (JNK1).

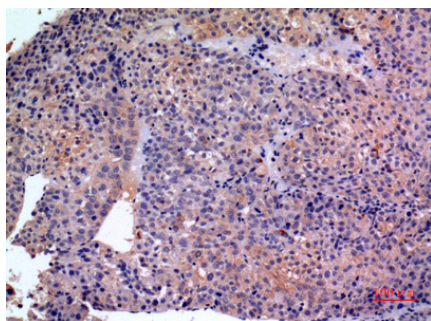
Images



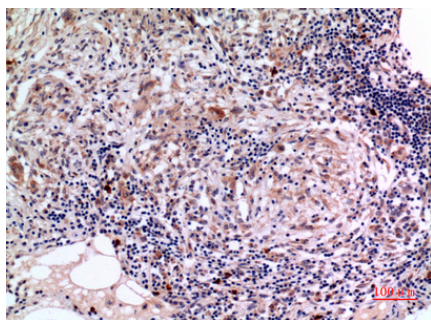
Western Blot analysis of Jurkat, 293 cells using SCCA1/2 Polyclonal Antibody.. Secondary antibody was diluted at 1:20000



Immunohistochemical analysis of paraffin-embedded human-liver-cancer, antibody was diluted at 1:100

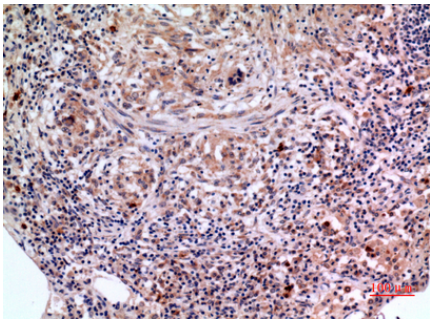


Immunohistochemical analysis of paraffin-embedded human-liver-cancer, antibody was diluted at 1:100



Immunohistochemical analysis of paraffin-embedded human-lung, antibody was diluted at 1:100

Immunohistochemical analysis of paraffin-embedded human-lung, antibody was diluted at 1:100



Please note: All products are 'FOR RESEARCH USE ONLY. NOT FOR USE IN DIAGNOSTIC OR THERAPEUTIC PROCEDURES'.