

Pax-5 Polyclonal Antibody

Catalog # AP73495

Product Information

Application	WB, IHC-P
Primary Accession	Q02548
Reactivity	Human, Mouse
Host	Rabbit
Clonality	Polyclonal
Calculated MW	42149

Additional Information

Gene ID	5079
Other Names	PAX5; Paired box protein Pax-5; B-cell-specific transcription factor; BSAP
Dilution	WB~~Western Blot: 1/500 - 1/2000. IHC-p: 1/100-1/300. ELISA: 1/20000. Not yet tested in other applications. IHC-P~~N/A
Format	Liquid in PBS containing 50% glycerol, 0.5% BSA and 0.09% (W/V) sodium azide.
Storage Conditions	-20°C

Protein Information

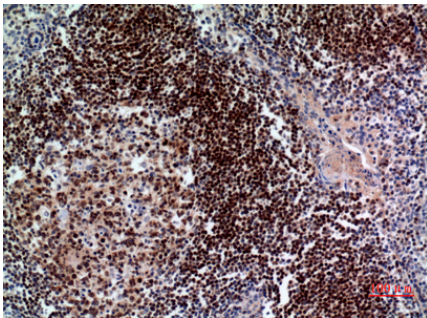
Name	PAX5
Function	Transcription factor that plays an essential role in commitment of lymphoid progenitors to the B-lymphocyte lineage (PubMed: 10811620 , PubMed: 27181361). Fulfills a dual role by repressing B-lineage inappropriate genes and simultaneously activating B-lineage- specific genes (PubMed: 10811620 , PubMed: 27181361). In turn, regulates cell adhesion and migration, induces V(H)-to-D(H)J(H) recombination, facilitates pre-B-cell receptor signaling and promotes development to the mature B-cell stage (PubMed: 32612238). Repression of the cohesin- release factor WAPL causes global changes of the chromosomal architecture in pro-B cells to facilitate the generation of a diverse antibody repertoire (PubMed: 32612238).
Cellular Location	Nucleus.

Background

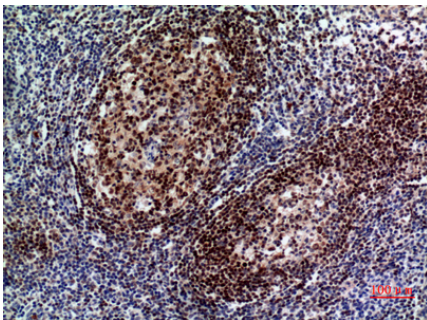
May play an important role in B-cell differentiation as well as neural development and spermatogenesis. Involved in the regulation of the CD19 gene, a B-lymphoid-specific target gene.



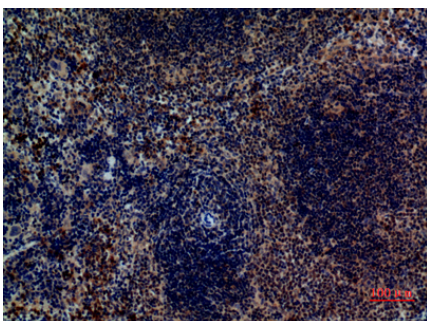
Western Blot analysis of 293 cells using Pax-5 Polyclonal Antibody.. Secondary antibody was diluted at 1:20000 cells nucleus extracted by Minute TM Cytoplasmic and Nuclear Fractionation kit (SC-003, Invent biotech, MN, USA).



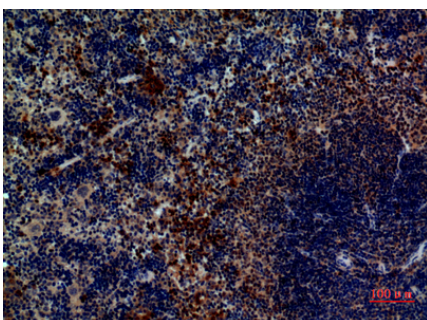
Immunohistochemical analysis of paraffin-embedded human-tonsil, antibody was diluted at 1:100



Immunohistochemical analysis of paraffin-embedded human-tonsil, antibody was diluted at 1:100



Immunohistochemical analysis of paraffin-embedded mouse-spleen, antibody was diluted at 1:100



Immunohistochemical analysis of paraffin-embedded mouse-spleen, antibody was diluted at 1:100

Please note: All products are 'FOR RESEARCH USE ONLY. NOT FOR USE IN DIAGNOSTIC OR THERAPEUTIC PROCEDURES'.