

Cytokeratin 8 Polyclonal Antibody

Catalog # AP73511

Product Information

Application	WB, IHC-P
Primary Accession	P05787
Reactivity	Human
Host	Rabbit
Clonality	Polyclonal
Calculated MW	53704

Additional Information

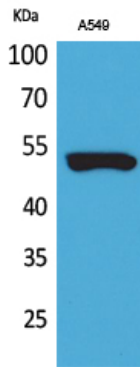
Gene ID	3856
Other Names	KRT8; CYK8; Keratin, type II cytoskeletal 8; Cytokeratin-8; CK-8; Keratin-8; K8; Type-II keratin Kb8
Dilution	WB~~Western Blot: 1/500 - 1/2000. IHC-p: 1/100-1/300. ELISA: 1/20000. Not yet tested in other applications. IHC-P~~N/A
Format	Liquid in PBS containing 50% glycerol, 0.5% BSA and 0.09% (W/V) sodium azide.
Storage Conditions	-20°C

Protein Information

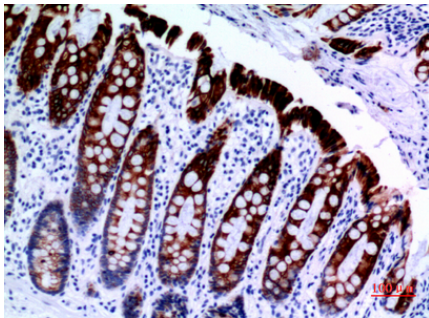
Name	KRT8
Synonyms	CYK8
Function	Together with KRT19, helps to link the contractile apparatus to dystrophin at the costameres of striated muscle.
Cellular Location	Cytoplasm. Nucleus, nucleoplasm {ECO:0000250 UniProtKB:Q10758}. Nucleus matrix {ECO:0000250 UniProtKB:Q10758}
Tissue Location	Observed in muscle fibers accumulating in the costameres of myoplasm at the sarcolemma membrane in structures that contain dystrophin and spectrin. Expressed in gingival mucosa and hard palate of the oral cavity.

Background

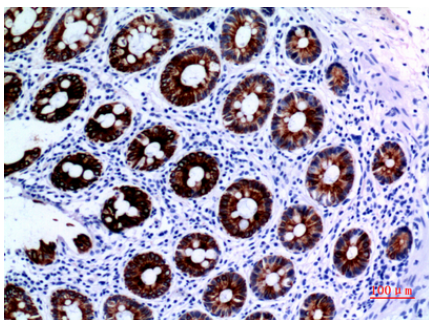
Together with KRT19, helps to link the contractile apparatus to dystrophin at the costameres of striated muscle.



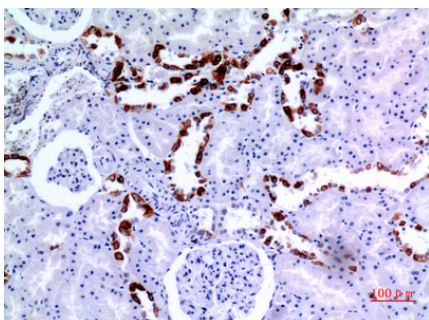
Western Blot analysis of A549 cells using Cytokeratin 8 Polyclonal Antibody.. Secondary antibody was diluted at 1:20000



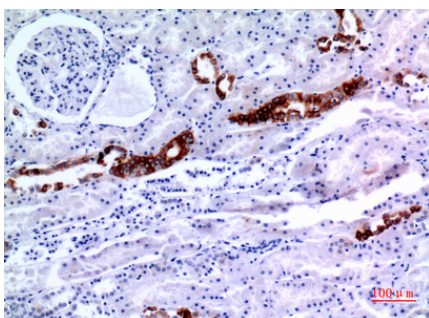
Immunohistochemical analysis of paraffin-embedded human-colon, antibody was diluted at 1:100



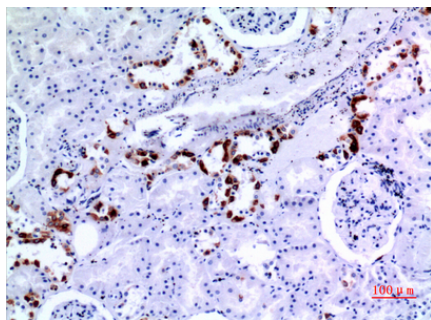
Immunohistochemical analysis of paraffin-embedded human-colon, antibody was diluted at 1:100



Immunohistochemical analysis of paraffin-embedded human-kidney, antibody was diluted at 1:100



Immunohistochemical analysis of paraffin-embedded human-kidney, antibody was diluted at 1:100



Immunohistochemical analysis of paraffin-embedded human-kidney, antibody was diluted at 1:100

Please note: All products are 'FOR RESEARCH USE ONLY. NOT FOR USE IN DIAGNOSTIC OR THERAPEUTIC PROCEDURES'.