

Tubulin α Polyclonal Antibody

Catalog # AP73528

Product Information

Application	WB, IHC-P
Primary Accession	Q71U36
Reactivity	Human, Mouse, Rat
Host	Rabbit
Clonality	Polyclonal
Calculated MW	50136

Additional Information

Gene ID	7846
Other Names	TUBA1A; TUBA3; Tubulin alpha-1A chain; Alpha-tubulin 3; Tubulin B-alpha-1; Tubulin alpha-3 chain; TUBA1B; Tubulin alpha-1B chain; Alpha-tubulin ubiquitous; Tubulin K-alpha-1; Tubulin alpha-ubiquitous chain; TUBA1C; TUBA6; Tubulin alpha-1C chain; Alpha-tubulin 6; Tubulin alpha-6 chain; TUBA3C; TUBA2; TUBA3D; Tubulin alpha-3C/D chain; Alpha-tubulin 2; Alpha-tubulin 3C/D; Tubulin alpha-2 chain; TUBA4A; TUBA1; Tubulin alpha-4A chain; Alpha-tubulin 1;
Dilution	WB~~Western Blot: 1/500 - 1/2000. IHC-p: 1/100-1/300. ELISA: 1/20000. Not yet tested in other applications. IHC-P~~Western Blot: 1/500 - 1/2000. IHC-p: 1/100-1/300. ELISA: 1/20000. Not yet tested in other applications.
Format	Liquid in PBS containing 50% glycerol, 0.5% BSA and 0.09% (W/V) sodium azide.
Storage Conditions	-20°C

Protein Information

Name	TUBA1A
Synonyms	TUBA3
Function	Tubulin is the major constituent of microtubules, a cylinder consisting of laterally associated linear protofilaments composed of alpha- and beta-tubulin heterodimers. Microtubules grow by the addition of GTP-tubulin dimers to the microtubule end, where a stabilizing cap forms. Below the cap, tubulin dimers are in GDP-bound state, owing to GTPase activity of alpha-tubulin.
Cellular Location	Cytoplasm, cytoskeleton. Cytoplasm, cytoskeleton, flagellum axoneme {ECO:0000250 UniProtKB:P68369}

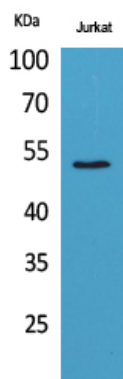
Tissue Location

Expressed at a high level in fetal brain.

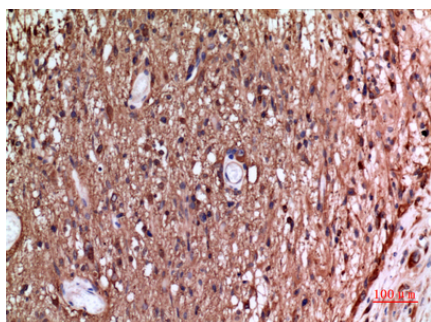
Background

Tubulin is the major constituent of microtubules. It binds two moles of GTP, one at an exchangeable site on the beta chain and one at a non-exchangeable site on the alpha chain.

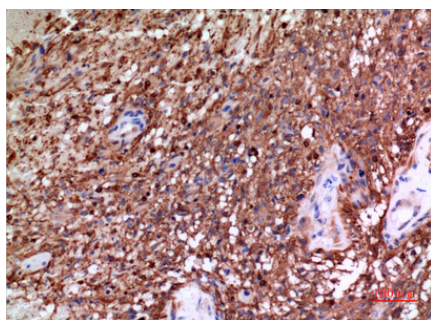
Images



Western Blot analysis of Jurkat cells using Tubulin α Polyclonal Antibody. Antibody was diluted at 1:1000. Secondary antibody was diluted at 1:20000



Immunohistochemical analysis of paraffin-embedded human-brain, antibody was diluted at 1:100



Immunohistochemical analysis of paraffin-embedded human-brain, antibody was diluted at 1:100

Please note: All products are 'FOR RESEARCH USE ONLY. NOT FOR USE IN DIAGNOSTIC OR THERAPEUTIC PROCEDURES'.