

Angptl1 Polyclonal Antibody

Catalog # AP73547

Product Information

| | |
|--------------------------|------------------------|
| Application | WB, IHC-P, IF, ICC, E |
| Primary Accession | O95841 |
| Reactivity | Human, Mouse, Rat |
| Host | Rabbit |
| Clonality | Polyclonal |
| Calculated MW | 56720 |

Additional Information

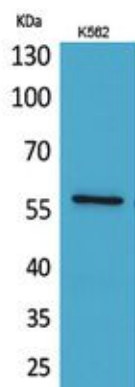
| | |
|---------------------------|---|
| Gene ID | 9068 |
| Other Names | ANGPTL1; ANG3; ANGPT3; ARP1; PSEC0154; Angiopoietin-related protein 1; Angiopoietin-3; ANG-3; Angiopoietin-like protein 1 |
| Dilution | WB~~Western Blot: 1/500 - 1/2000. IHC-p: 1/100-1/300. ELISA: 1/20000. Not yet tested in other applications. IHC-P~~Western Blot: 1/500 - 1/2000. IHC-p: 1/100-1/300. ELISA: 1/20000. Not yet tested in other applications. IF~~1:50~200 ICC~~N/A E~~N/A |
| Format | Liquid in PBS containing 50% glycerol, 0.5% BSA and 0.09% (W/V) sodium azide. |
| Storage Conditions | -20°C |

Protein Information

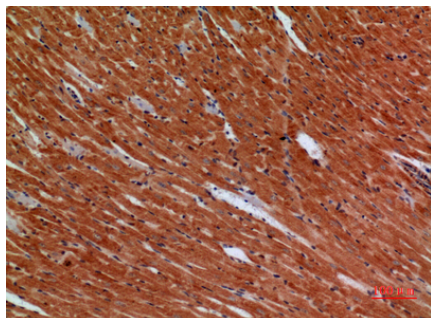
| | |
|--------------------------|--|
| Name | ANGPTL1 |
| Synonyms | ANG3, ANGPT3, ARP1 |
| Cellular Location | Secreted. |
| Tissue Location | Highly expressed in adrenal gland, placenta, thyroid gland, heart, skeletal muscle and small intestine. Weakly expressed in testis, ovary, colon, pancreas, kidney and stomach |

Images

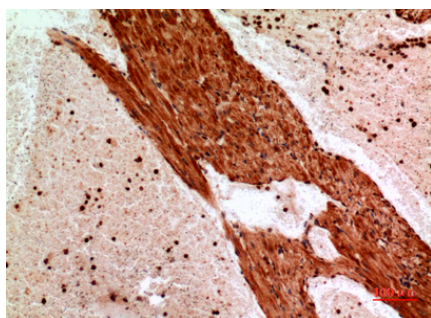
Western Blot analysis of K562 cells using Angptl1
Polyclonal Antibody.. Secondary antibody was diluted at



1:20000



Immunohistochemical analysis of paraffin-embedded mouse-heart, antibody was diluted at 1:100



Immunohistochemical analysis of paraffin-embedded mouse-heart, antibody was diluted at 1:100

Please note: All products are 'FOR RESEARCH USE ONLY. NOT FOR USE IN DIAGNOSTIC OR THERAPEUTIC PROCEDURES'.