

# ALPP/ALPPL2 Polyclonal Antibody

Catalog # AP73558

## Product Information

---

<b>Application</b>	WB, E
<b>Primary Accession</b>	<a href="#">P05187</a> , <a href="#">P10696</a>
<b>Reactivity</b>	Human, Mouse
<b>Host</b>	Rabbit
<b>Clonality</b>	Polyclonal
<b>Calculated MW</b>	57954

## Additional Information

---

<b>Gene ID</b>	250
<b>Other Names</b>	ALPP; PLAP; Alkaline phosphatase, placental type; Alkaline phosphatase Regan isozyme; Placental alkaline phosphatase 1; PLAP-1; ALPPL2; ALPPL; Alkaline phosphatase, placental-likeALP-1; Alkaline phosphatase Nagao isozyme; Germ cell alkaline phosphatase; GCAP; Placental alkaline phosphatase-like; PLAP-like
<b>Dilution</b>	WB~~Western Blot: 1/500 - 1/2000. ELISA: 1/20000. Not yet tested in other applications. E~~N/A
<b>Format</b>	Liquid in PBS containing 50% glycerol, 0.5% BSA and 0.09% (W/V) sodium azide.
<b>Storage Conditions</b>	-20°C

## Protein Information

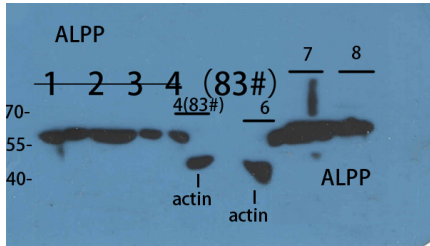
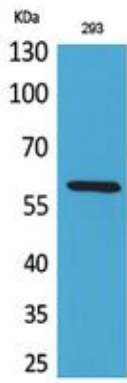
---

<b>Name</b>	ALPP ( <a href="#">HGNC:439</a> )
<b>Function</b>	Alkaline phosphatase that can hydrolyze various phosphate compounds.
<b>Cellular Location</b>	Cell membrane; Lipid-anchor, GPI-anchor
<b>Tissue Location</b>	Detected in placenta (at protein level).

## Images

---

Western Blot analysis of 293 cells using ALPP/ALPPL2 Polyclonal Antibody. Antibody was diluted at 1:2000. Secondary antibody was diluted at 1:20000



1 2 3 4 customer's cell  
 6 293T  
 7 Hela  
 8 K562

Western Blot analysis of customer's sample using ALPP/ALPPL2 Polyclonal Antibody. Antibody was diluted at 1:2000. Secondary antibody was diluted at 1:20000

Please note: All products are 'FOR RESEARCH USE ONLY. NOT FOR USE IN DIAGNOSTIC OR THERAPEUTIC PROCEDURES'.