

CGREF1 Polyclonal Antibody

Catalog # AP73559

Product Information

Application	WB, IHC-P
Primary Accession	Q99674
Reactivity	Human
Host	Rabbit
Clonality	Polyclonal
Calculated MW	33456

Additional Information

Gene ID	10669
Other Names	CGREF1; CGR11; Cell growth regulator with EF hand domain protein 1; Cell growth regulatory gene 11 protein; Hydrophobestin
Dilution	WB~~Western Blot: 1/500 - 1/2000. IHC-p: 1/100-1/300. ELISA: 1/20000. Not yet tested in other applications. IHC-P~~Western Blot: 1/500 - 1/2000. IHC-p: 1/100-1/300. ELISA: 1/20000. Not yet tested in other applications.
Format	Liquid in PBS containing 50% glycerol, 0.5% BSA and 0.09% (W/V) sodium azide.
Storage Conditions	-20°C

Protein Information

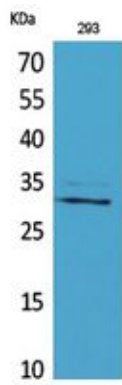
Name	CGREF1 (HGNC:16962)
Function	Mediates cell-cell adhesion in a calcium-dependent manner (By similarity). Able to inhibit growth in several cell lines.
Cellular Location	Secreted.

Background

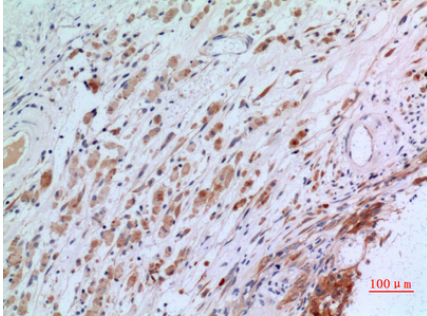
Mediates cell-cell adhesion in a calcium-dependent manner (By similarity). Able to inhibit growth in several cell lines.

Images

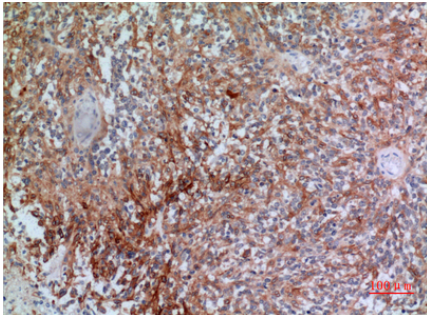
Western Blot analysis of 293 cells using CGREF1



Polyclonal Antibody.. Secondary antibody was diluted at 1:20000



Immunohistochemical analysis of paraffin-embedded human-brain, antibody was diluted at 1:100



Immunohistochemical analysis of paraffin-embedded human-brain, antibody was diluted at 1:100

Please note: All products are 'FOR RESEARCH USE ONLY. NOT FOR USE IN DIAGNOSTIC OR THERAPEUTIC PROCEDURES'.