

CD163b Polyclonal Antibody

Catalog # AP73589

Product Information

Application	WB, IHC-P
Primary Accession	Q9NR16
Reactivity	Human
Host	Rabbit
Clonality	Polyclonal
Calculated MW	159239

Additional Information

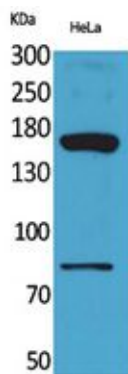
Gene ID	283316
Other Names	CD163L1; CD163B; M160; Scavenger receptor cysteine-rich type 1 protein M160; CD163 antigen-like 1; CD163b
Dilution	WB~~Western Blot: 1/500 - 1/2000. IHC-p: 1/100-1/300. ELISA: 1/20000. Not yet tested in other applications. IHC-P~~N/A
Format	Liquid in PBS containing 50% glycerol, 0.5% BSA and 0.09% (W/V) sodium azide.
Storage Conditions	-20°C

Protein Information

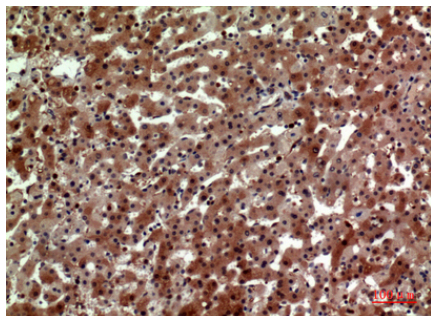
Name	CD163L1
Synonyms	CD163B, M160
Cellular Location	[Isoform 1]: Cell membrane; Single- pass type I membrane protein [Isoform 3]: Secreted.
Tissue Location	Isoform 1 is highly expressed in the spleen, lymph nodes, thymus, and fetal liver and weakly expressed in bone marrow and no expression was found in peripheral blood leukocytes. Isoform 1 expression is restricted to the monocyte and macrophage cell lines Isoform 2 is only expressed in spleen.

Images

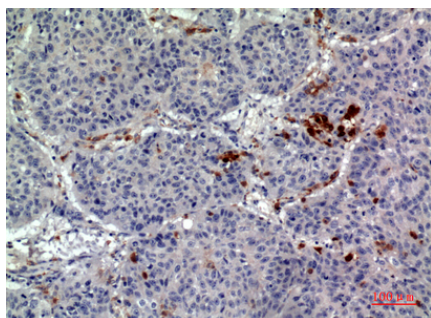
Western Blot analysis of HeLa cells using CD163b Polyclonal Antibody.. Secondary antibody was diluted at



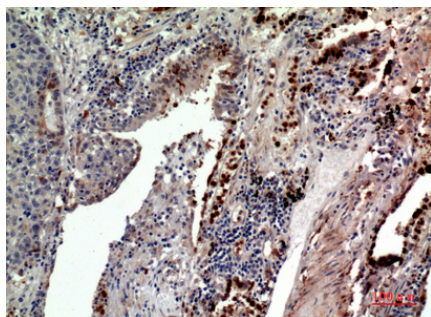
1:20000



Immunohistochemical analysis of paraffin-embedded human-liver, antibody was diluted at 1:100



Immunohistochemical analysis of paraffin-embedded human-lung, antibody was diluted at 1:100



Immunohistochemical analysis of paraffin-embedded human-lung, antibody was diluted at 1:100

Please note: All products are 'FOR RESEARCH USE ONLY. NOT FOR USE IN DIAGNOSTIC OR THERAPEUTIC PROCEDURES'.