

Cerberus Polyclonal Antibody

Catalog # AP73593

Product Information

| | |
|--------------------------|------------------------|
| Application | WB, IHC-P |
| Primary Accession | O95813 |
| Reactivity | Human, Rat |
| Host | Rabbit |
| Clonality | Polyclonal |
| Calculated MW | 30084 |

Additional Information

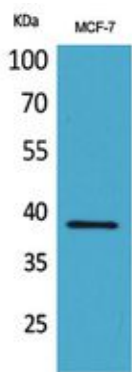
| | |
|---------------------------|------------------------------------------------------------------------------------------------------------------------|
| Gene ID | 9350 |
| Other Names | CER1; DAND4; Cerberus; Cerberus-related protein; DAN domain family member 4 |
| Dilution | WB~~Western Blot: 1/500 - 1/2000. IHC-p: 1/100-1/300. ELISA: 1/20000. Not yet tested in other applications. IHC-P~~N/A |
| Format | Liquid in PBS containing 50% glycerol, 0.5% BSA and 0.09% (W/V) sodium azide. |
| Storage Conditions | -20°C |

Protein Information

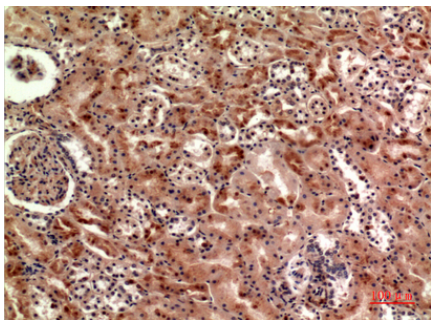
| | |
|--------------------------|-------------------------------------------------------------------------------------------------------------------------------------------------------------------------------------------------------------------------------------------------------------------------------------|
| Name | CER1 |
| Synonyms | DAND4 |
| Function | Cytokine that may play a role in anterior neural induction and somite formation during embryogenesis in part through a BMP- inhibitory mechanism. Can regulate Nodal signaling during gastrulation as well as the formation and patterning of the primitive streak (By similarity). |
| Cellular Location | Secreted. |

Background

Cytokine that may play a role in anterior neural induction and somite formation during embryogenesis in part through a BMP-inhibitory mechanism. Can regulate Nodal signaling during gastrulation as well as the formation and patterning of the primitive streak (By similarity).



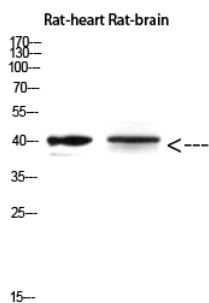
Western Blot analysis of MCF-7 cells using Cerberus Polyclonal Antibody. Antibody was diluted at 1:500. Secondary antibody was diluted at 1:20000



Immunohistochemical analysis of paraffin-embedded human-kidney, antibody was diluted at 1:100



Immunohistochemical analysis of paraffin-embedded human-spleen, antibody was diluted at 1:100



Western Blot analysis of Rat-heart Rat-brain using Cerberus Polyclonal Antibody diluted at 1:500. Secondary antibody was diluted at 1:20000

Please note: All products are 'FOR RESEARCH USE ONLY. NOT FOR USE IN DIAGNOSTIC OR THERAPEUTIC PROCEDURES'.