

IFN- ω Polyclonal Antibody

Catalog # AP73598

Product Information

Application	WB, IHC-P
Primary Accession	P05000
Reactivity	Human
Host	Rabbit
Clonality	Polyclonal
Calculated MW	22319

Additional Information

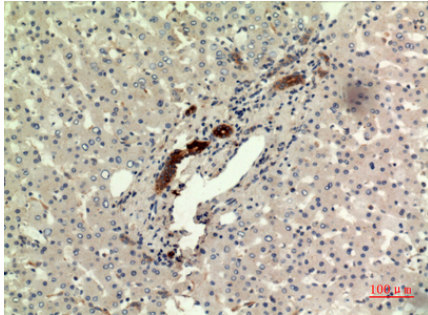
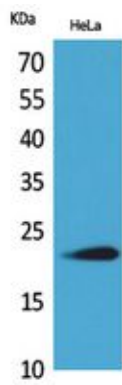
Gene ID	3467
Other Names	IFNW1; Interferon omega-1; Interferon alpha-II-1
Dilution	WB~~Western Blot: 1/500 - 1/2000. IHC-p: 1/100-1/300. ELISA: 1/20000. Not yet tested in other applications. IHC-P~~Western Blot: 1/500 - 1/2000. IHC-p: 1/100-1/300. ELISA: 1/20000. Not yet tested in other applications.
Format	Liquid in PBS containing 50% glycerol, 0.5% BSA and 0.09% (W/V) sodium azide.
Storage Conditions	-20°C

Protein Information

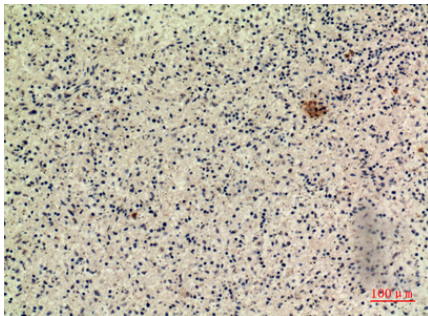
Name	IFNW1
Cellular Location	Secreted.

Images

Western Blot analysis of HeLa cells using IFN- ω Polyclonal Antibody.. Secondary antibody was diluted at 1:20000



Immunohistochemical analysis of paraffin-embedded human-liver, antibody was diluted at 1:100



Immunohistochemical analysis of paraffin-embedded human-spleen, antibody was diluted at 1:100

Please note: All products are 'FOR RESEARCH USE ONLY. NOT FOR USE IN DIAGNOSTIC OR THERAPEUTIC PROCEDURES'.