

DRA Polyclonal Antibody

Catalog # AP73600

Product Information

Application	WB
Primary Accession	P40879
Reactivity	Human, Mouse, Rat
Host	Rabbit
Clonality	Polyclonal
Calculated MW	84505

Additional Information

Gene ID	1811
Other Names	SLC26A3; DRA; Chloride anion exchanger; Down-regulated in adenoma; Protein DRA; Solute carrier family 26 member 3
Dilution	WB~~Western Blot: 1/500 - 1/2000. ELISA: 1/20000. Not yet tested in other applications.
Format	Liquid in PBS containing 50% glycerol, 0.5% BSA and 0.09% (W/V) sodium azide.
Storage Conditions	-20°C

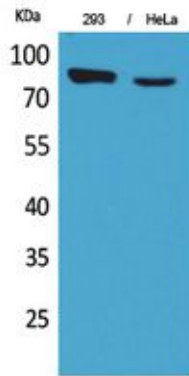
Protein Information

Name	SLC26A3
Synonyms	DRA
Function	Mediates chloride-bicarbonate exchange with a chloride bicarbonate stoichiometry of 2:1 in the intestinal epithelia (PubMed: 16606687 , PubMed: 19321737 , PubMed: 22159084 , PubMed: 22627094). Plays a role in the chloride and bicarbonate homeostasis during sperm epididymal maturation and capacitation (By similarity).
Cellular Location	Apical cell membrane; Multi-pass membrane protein. Membrane {ECO:0000250 UniProtKB:Q9WVC8}; Multi-pass membrane protein. Cell membrane; Multi-pass membrane protein. Note=Localized in sperm membranes Midpiece of sperm tail. Colocalizes with CFTR at the midpiece of sperm tail (By similarity). {ECO:0000250 UniProtKB:Q9WVC8}
Tissue Location	Expressed in the colon. Expression is significantly decreased in adenomas (polyps) and adenocarcinomas of the colon

Background

Chloride/bicarbonate exchanger. Mediates the efficient absorption of chloride ions in the colon, participating in fluid homeostasis. Plays a role in the chloride and bicarbonate homeostasis during sperm epididymal maturation and capacitation.

Images



Western Blot analysis of 293, HeLa cells using DRA Polyclonal Antibody.. Secondary antibody was diluted at 1:20000

Please note: All products are 'FOR RESEARCH USE ONLY. NOT FOR USE IN DIAGNOSTIC OR THERAPEUTIC PROCEDURES'.