

EKLF Polyclonal Antibody

Catalog # AP73608

Product Information

Application	WB, E
Primary Accession	Q13351
Reactivity	Human, Rat, Mouse
Host	Rabbit
Clonality	Polyclonal
Calculated MW	38221

Additional Information

Gene ID	10661
Other Names	KLF1; EKLF; Krueppel-like factor 1; Erythroid krueppel-like transcription factor; EKLF
Dilution	WB~~Western Blot: 1/500 - 1/2000. ELISA: 1/20000. Not yet tested in other applications. E~~N/A
Format	Liquid in PBS containing 50% glycerol, 0.5% BSA and 0.09% (W/V) sodium azide.
Storage Conditions	-20°C

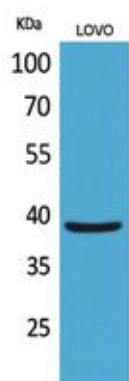
Protein Information

Name	KLF1
Synonyms	EKLF
Function	Transcription regulator of erythrocyte development that probably serves as a general switch factor during erythropoiesis. Is a dual regulator of fetal-to-adult globin switching. Binds to the CACCC box in the beta-globin gene promoter and acts as a preferential activator of this gene. Furthermore, it binds to the BCL11A promoter and activates expression of BCL11A, which in turn represses the HBG1 and HBG2 genes. This dual activity ensures that, in most adults, fetal hemoglobin levels are low. Able to activate CD44 and AQP1 promoters (PubMed: 21055716). When sumoylated, acts as a transcriptional repressor by promoting interaction with CDH2/M12beta and also represses megakaryocytic differentiation.
Cellular Location	Nucleus. Note=Colocalizes with SUMO1 in nuclear speckles.
Tissue Location	Expression restricted to adult bone marrow and fetal liver. Not expressed in myeloid nor lymphoid cell lines

Background

Transcription regulator of erythrocyte development that probably serves as a general switch factor during erythropoiesis. Is a dual regulator of fetal-to-adult globin switching. Binds to the CACCC box in the beta-globin gene promoter and acts as a preferential activator of this gene. Furthermore, it binds to the BCL11A promoter and activates expression of BCL11A, which in turn represses the HBG1 and HBG2 genes. This dual activity ensures that, in most adults, fetal hemoglobin levels are low. Able to activate CD44 and AQP1 promoters. When sumoylated, acts as a transcriptional repressor by promoting interaction with CDH2/MI2beta and also represses megakaryocytic differentiation.

Images



Western Blot analysis of LOVO cells using EKLF Polyclonal Antibody.. Secondary antibody was diluted at 1:20000 cells nucleus extracted by Minute TM Cytoplasmic and Nuclear Fractionation kit (SC-003, Inventbiotech, MN, USA).

Please note: All products are 'FOR RESEARCH USE ONLY. NOT FOR USE IN DIAGNOSTIC OR THERAPEUTIC PROCEDURES'.